

P R E S S R E L E A S E

Royal Huisman and Malcolm McKeon are proud to present the world's largest sloop:

THE SENSATIONAL APEX 850

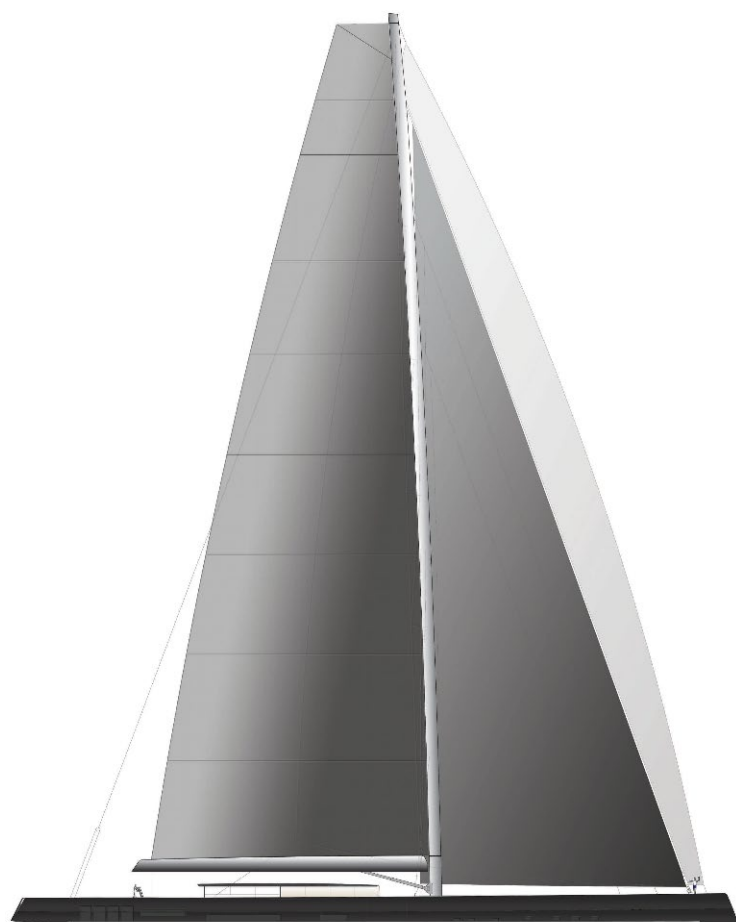
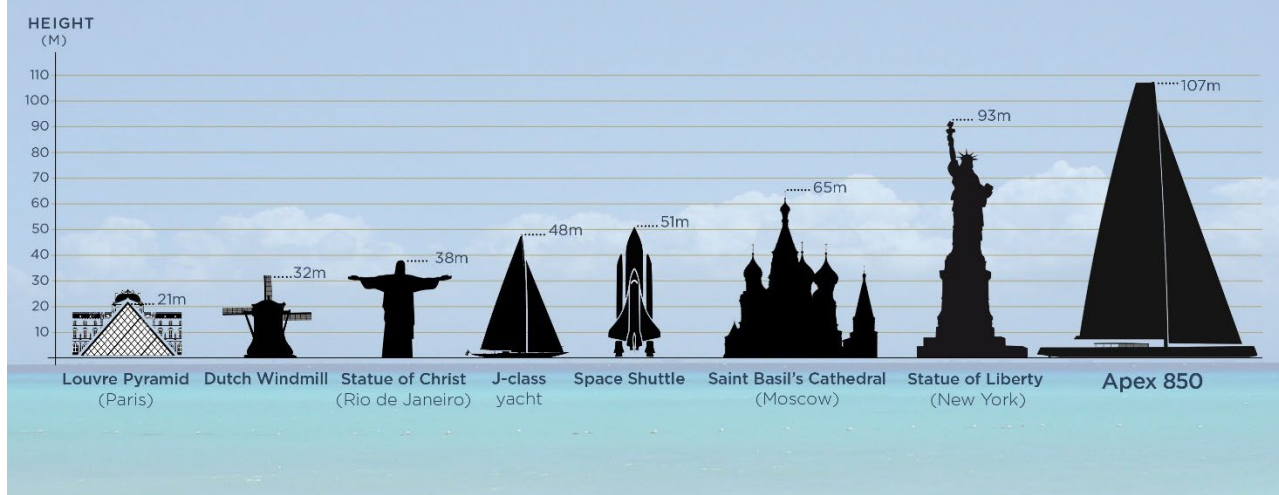


This is undoubtedly the most ambitious and inspiring concept yet to be developed in an exclusive relationship between Royal Huisman and the renowned superyacht designer Malcolm McKeon.

Above her sleek and powerful 85m / 279ft hull, APEX features a towering 107m / 351ft air-draft rig that will dominate the marine landscape wherever in the world she drops anchor.



TALL, TALLER, TALLEST...



Stunning minimalism in every aspect of McKeon's radical design serves to emphasise the grace and potential of this extraordinary ocean greyhound. Even the all-glass superstructure, encompassing some 200m² / 2150ft² of guest cockpit and a luxurious saloon, scarcely seems to be there - an understated, almost ethereal presence.

PRESS RELEASE



APEX 850 is fully resolved in terms of design, naval architecture and engineering. Technical challenges have been identified and addressed; potential for refinement explored and incorporated. The concept is therefore an unprecedented opportunity for an ambitious and creative owner to stamp their individuality while still viewing an unusually attractive delivery date for such a project.

PRESS RELEASE



Malcolm McKeon comments: "The sailing experience of APEX 850 will be sensational, with speeds in excess of wind speed in most conditions. Her retractable keel, optimised weight distribution and limited heel angle will provide stability, comfort and safety for all on board. Her twin high aspect rudders will provide a rapid response to her fly by wire helm."

Royal Huisman CEO Jan Timmerman adds: "Two of the world's ten largest sailing yachts, ATHENA and SEA EAGLE II, are Royal Huisman builds and APEX 850 would make a fitting third, easily becoming the largest member of this elite circle. Every Royal Huisman yacht benefits from the research, innovations and challenges of our previous builds, ensuring this would be the finest yet."

END OF PRESS RELEASE

PRESS RELEASE

EDITOR'S NOTES

Detailed information, renderings and layouts



APEX 850 - THE WORLD'S LARGEST SLOOP

AN UNPRECEDENTED OPPORTUNITY FOR AN INSPIRED OWNER

The APEX 850 mega sloop is one of the most exciting concepts the yachting world has ever seen. Dramatic in scale yet elegant in appearance, the 85m / 279ft APEX features a mind-blowing 107m / 351ft rig, qualifying as both the world's largest sloop and the world's largest aluminium sailing yacht. She will effortlessly join the top ten largest sailing boats.

PRESS RELEASE

Inspirational design from celebrated naval architect Malcom McKeon and innovative engineering from renowned Dutch shipyard Royal Huisman have resulted in a fully-resolved concept for a mega yacht that is bold and ambitious enough to comprehensively redefine on-board lifestyle and sailing experiences. Just add the refinements that express the vision and creativity of an inspired owner and she will be ready to commence construction. Once on the water, the world will look on in awe.

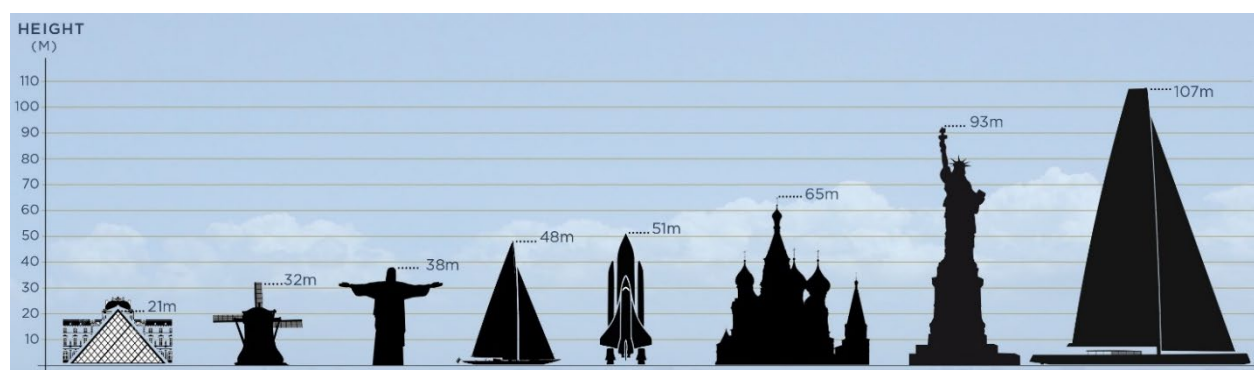




HELICOPTER VIEW ON APEX 850

APEX 850 – MAKING AN IMPRESSION

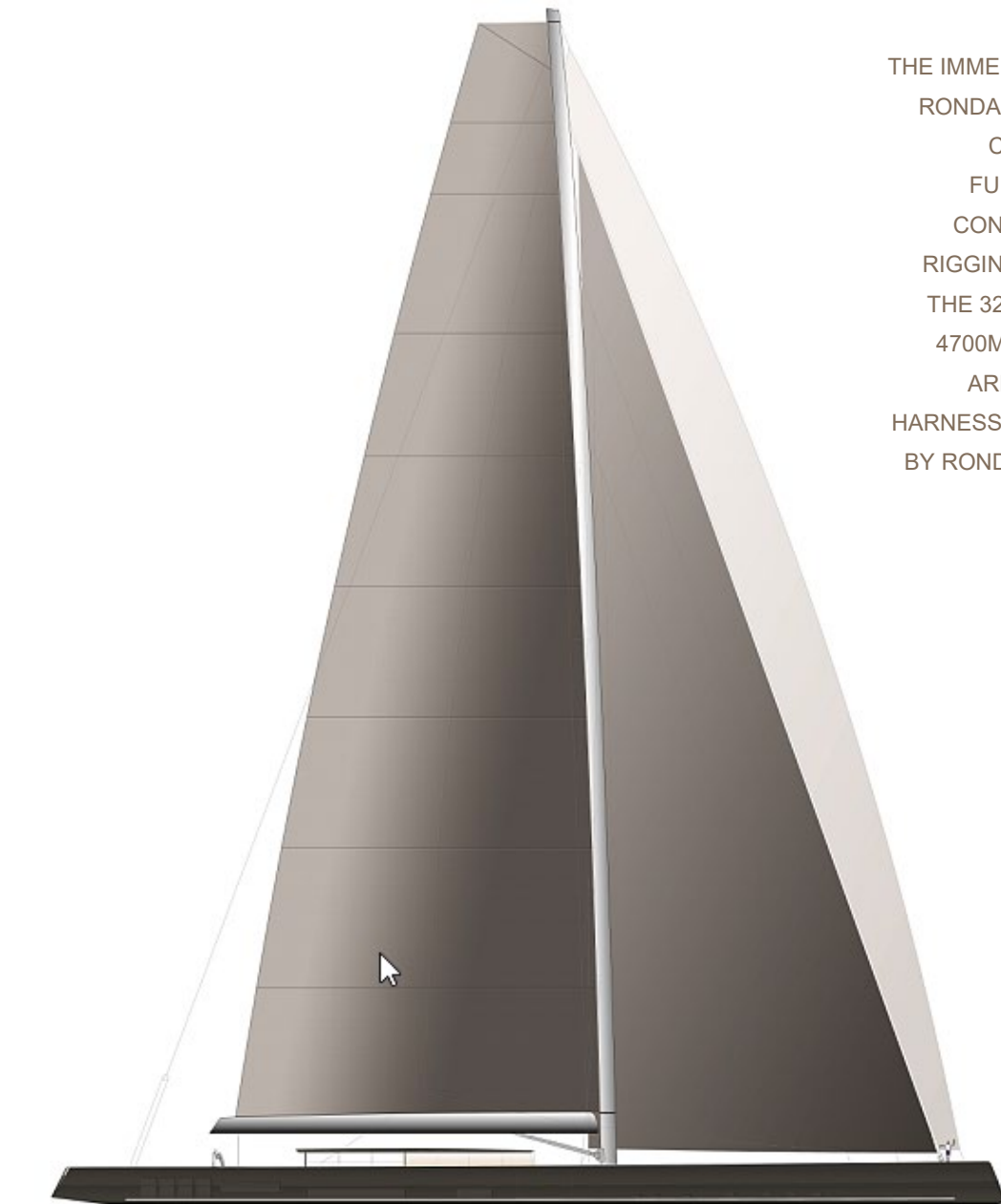
You know superyachts. You've been around them for some time and you're not so easily impressed. Be ready for a surprise...



TALL, TALLER, TALLEST: APEX 850'S DOMINATING RIG IN PERSPECTIVE - LOUVRE, PARIS: 21M / 68FT – DUTCH WINDMILL 32M / 105FT – STATUE OF CHRIST, RIO DE JANEIRO 38M / 128FT – J-CLASS YACHT 48M / 157FT – SPACE SHUTTLE 51M / 167FT – SAINT BASIL'S CATHEDRAL, MOSCOW 65M / 213FT – STATUE OF LIBERTY, NEW YORK, 93M / 305FT – APEX 850 RIG 107M / 351FT

PRESS RELEASE

The towering rig dominates everything in sight. There is no other show in town. At a distance, the long sleek hull with its subtle sheer and reverse bow seems just an elegant wisp above the water. But as you approach, you measure crew members against the 3.6m / 12ft topsides and suddenly appreciate the full stunning scale, the presence and status of this vessel. Gliding towards the boarding platform you glance skywards again, where the 107m / 351ft air-draft rig now imposes its presence with almost infinite grandeur.



THE IMMENSELY POWERFUL
RONDAL RIG FEATURES A
CARBON MAST AND
FURLING BOOM WITH
CONTINUOUS CARBON
RIGGING. THE POWER OF
THE 3200M² UPWIND AND
4700M² DOWNWIND SAIL
AREA IS EFFICIENTLY
HARNESSED AND MANAGED
BY RONDAL'S INTEGRATED
SAILING SYSTEM

PRESS RELEASE



AT A DISTANCE, THE LONG SLEEK HULL WITH ITS SUBTLE SHEER AND REVERSE BOW SEEMS JUST AN ELEGANT WISP ABOVE THE WATER. CLOSER TO, THE FULL STUNNING SCALE AND PRESENCE BECOME APPARENT, THE 107M / 351FT RIG IMPOSING ITSELF WITH ALMOST INFINITE GRANDEUR.



PRESS RELEASE



ON FIRST SIGHT IT IS IMPOSSIBLE NOT TO BE BLOWN AWAY BY THE SHEER SCALE, STYLE AND MINIMALIST CHIC OF THE DECK SPACE. THERE ARE NO WINCHES, FURLERS, MOORING CLEATS, ANCHOR GEAR OR OTHER DECK EQUIPMENT TO BE SEEN



THE SUPERSTRUCTURE HOUSES A PIVOTAL SOCIAL AREA, YET YOU WOULD HARDLY KNOW IT WAS THERE. CONTINUOUS CLEAR GLASS SIDES PROVIDE A VIRTUALLY SEE-THROUGH EXTERIOR AND ALSO ACT AS A NEAR-INVISIBLE STRUCTURAL COMPONENT. THE OVERALL EFFECT IS ETHEREAL

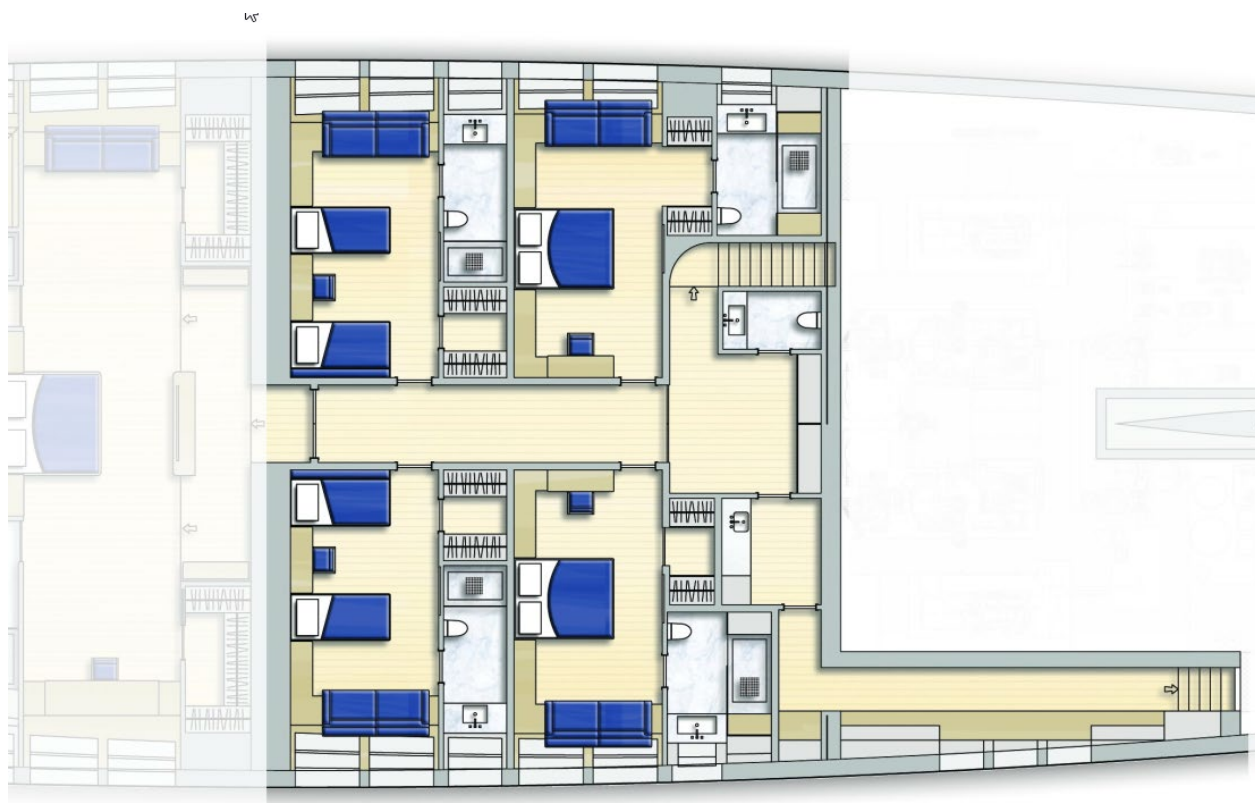
PRESS RELEASE

ENTERING ANOTHER WORLD

You step aboard and into a beautifully appointed lobby. Stairs upwards connect to the saloon and its all-glass superstructure, radiant with suffused light. You follow steps down to the guest corridor and find the four magnificent 30m² / 320ft² guest suites that can accommodate up to twelve guests in incomparable luxury. Beautifully appointed, the staterooms are highly adaptable, offering twin or double formats and Pullman berths for families.



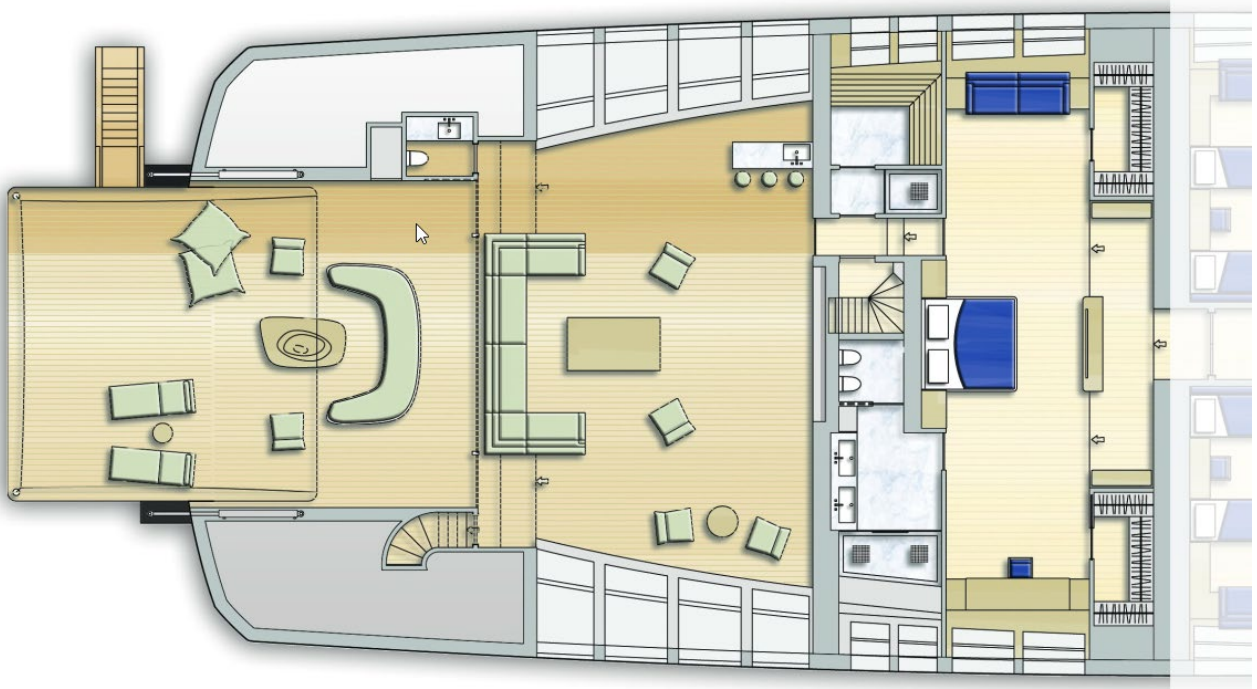
YOU STEP ABOARD AND INTO A BEAUTIFULLY APPOINTED LOBBY. STAIRS UPWARDS
CONNECT TO THE SALOON AND ITS ALL-GLASS SUPERSTRUCTURE, RADIANT WITH
SUFFUSED LIGHT. STEPS DOWN LEAD TO THE GUEST CORRIDOR AND ITS
STATEROOMS. AT ENTRY LEVEL, THE FULL-BEAM MIDSHIPS LAZARETTE ALSO
HOUSES A SERVERY, SPORTS AND DIVING EQUIPMENT AND MANY OTHER AMENITIES



THE FOUR MAGNIFICENT 30 M2 GUEST
SUITES CAN ACCOMMODATE UP TO
TWELVE GUESTS IN INCOMPARABLE
LUXURY. BEAUTIFULLY APPOINTED, THEY
ARE HIGHLY ADAPTABLE, OFFERING TWIN
OR DOUBLE FORMATS AND PULLMAN
BERTHS FOR FAMILIES. THEY ALSO BENEFIT
FROM A DEDICATED GUEST LOBBY WITH
ADDITIONAL FEATURES AND UTILITIES

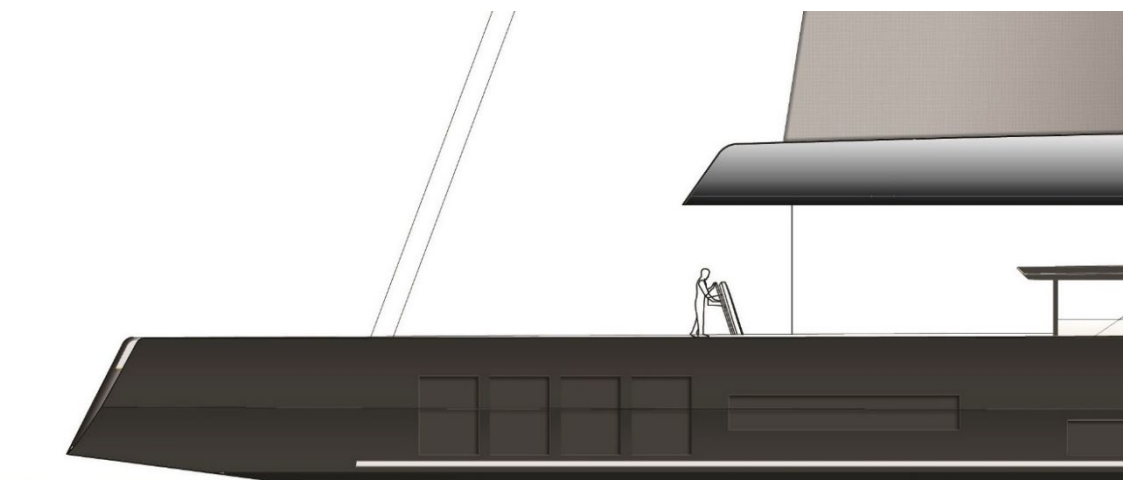
OWNERS' APARTMENT

Further aft resides APEX's stunning owners' area, occupying some 250 m2 / 2690 ft2 of real estate including a private beach club / cinema. The full-beam bedroom is encompassed by a private lounge, giant TV screen, sauna, walk-in wardrobe and spacious, beautifully-designed bathroom facilities.



THE STUNNING, FULL-BEAM OWNERS' APARTMENT OCCUPIES 250M2 OF REAL ESTATE. THE FULL-BEAM BEDROOM IS ENCOMPASSED BY A PRIVATE LOUNGE, GIANT TV SCREEN, SAUNA, WALK-IN WARDROBE AND SPACIOUS, BEAUTIFULLY-DESIGNED BATHROOM FACILITIES. LIGHT POURS IN FROM LARGE WINDOWS





Light pours in from large windows. It is hard to anticipate the impact, on opening doors aft, to find yourself in a private beach club / cinema with floor-to-ceiling glass walls on either side connecting directly with the seascape. The effect is spell-binding. The owners' beach club / cinema can also be accessed by guests from on deck.



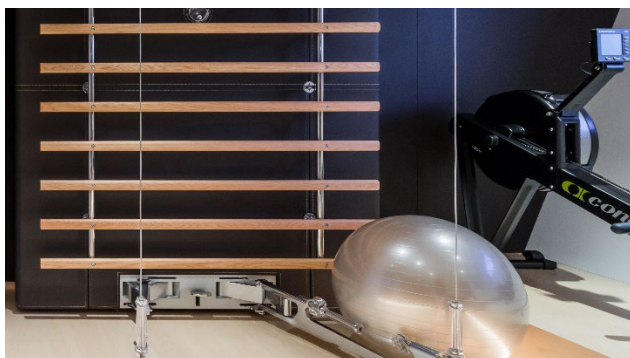
DOORS AFT FROM THE OWNERS' BEDROOM OPEN
INTO THE PRIVATE BEACH CLUB / CINEMA WITH
FLOOR-TO-CEILING GLASS WALLS PROVIDING A
DIRECT VISUAL CONNECTION WITH THE SEASCAPE.
THE EFFECT IS SPELL-BINDING

PRESS RELEASE



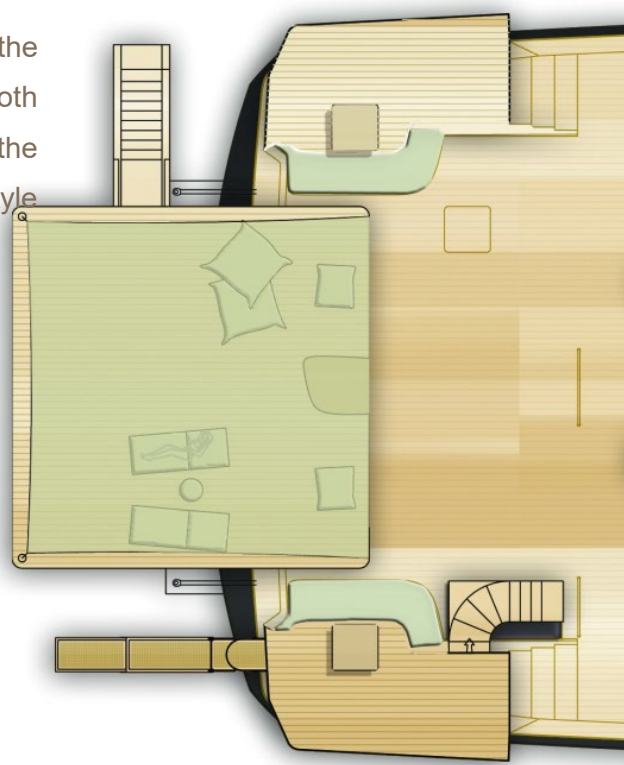
CLOSE CONNECTION WITH THE SEA

Fully aft, the transom and a section of deck swing silently out and over to reveal an expansive 50m² / 540ft² swim platform, gym and social area with direct access from the Owners' beach club.





Steps from the beach deck lead past seating on the stern quarters where guests can also relax – on both starboard and portside – in close connection with the sea - and then onto the main deck. The lifestyle aspects of APEX are truly in a class apart.



FULLY AFT, THE TRANSOM AND A
SECTION OF DECK SWING SILENTLY
OUT AND OVER TO REVEAL AN
EXPANSIVE 50M2 SWIM PLATFORM, GYM
AND SOCIAL AREA. THE LIFESTYLE
ASPECTS OF APEX ARE TRULY IN A
CLASS APART

PRESS RELEASE



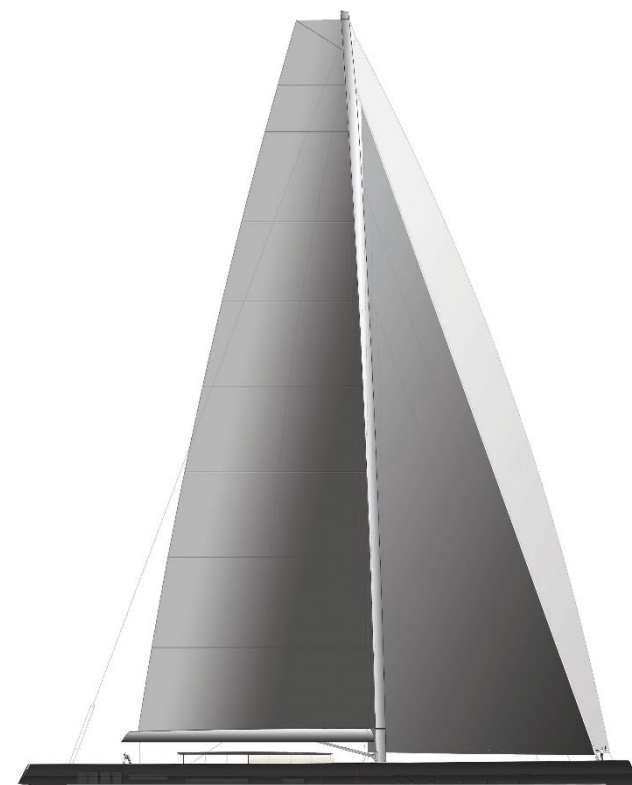
RELAX, IN A QUIET CORNER: EACH OF THE STERN QUARTERS HAS FOLD-OUT BULWARKS REVEALING TUCKED-AWAY SEATING BETWEEN DECK AND SEA LEVEL FOR CONNECTIVITY WITH THE OCEAN. STAIRS DOWN LEAD TO THE BEACH CLUB



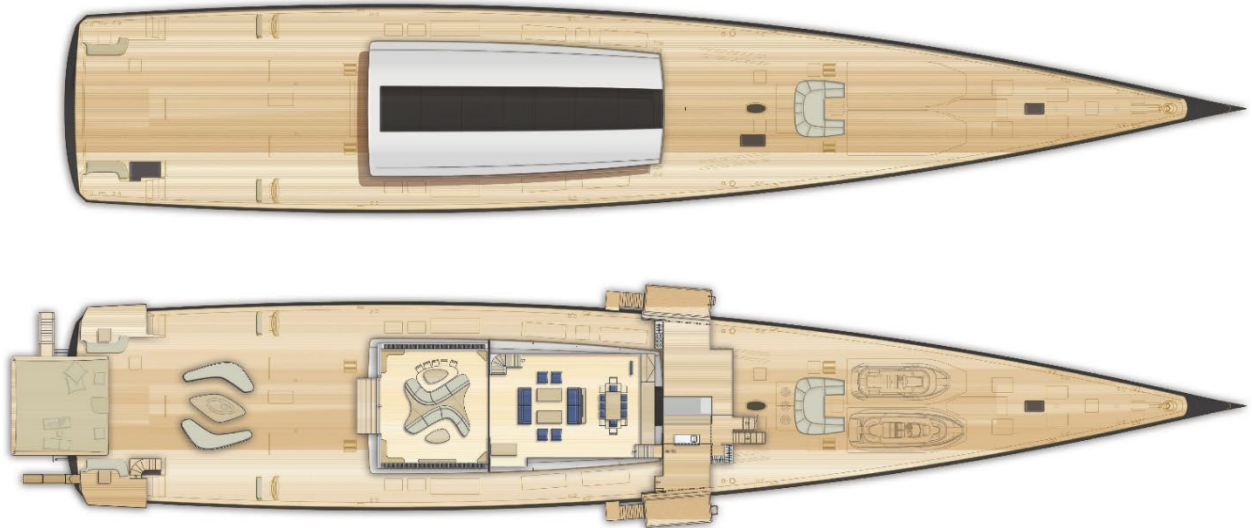


THE HEIGHT OF ELEGANCE

On first sight it is impossible not to be blown away by the sheer scale, style and minimalist chic of the deck space. Without winches, furlers, mooring cleats, anchor gear or other deck equipment in sight (all are sited or retracted below deck) your focus is seized first by the epic height of the rig and next by the shimmering hint of the all-glass superstructure.



apex
850



This superstructure houses a pivotal social area yet, from on deck, you would not know it. Nor are you meant to. Minimalism is the design ethos of the APEX 850 and her designers have gone to extraordinary lengths to ensure that this architectural element of the yacht not only supports that minimalism, but enhances it.

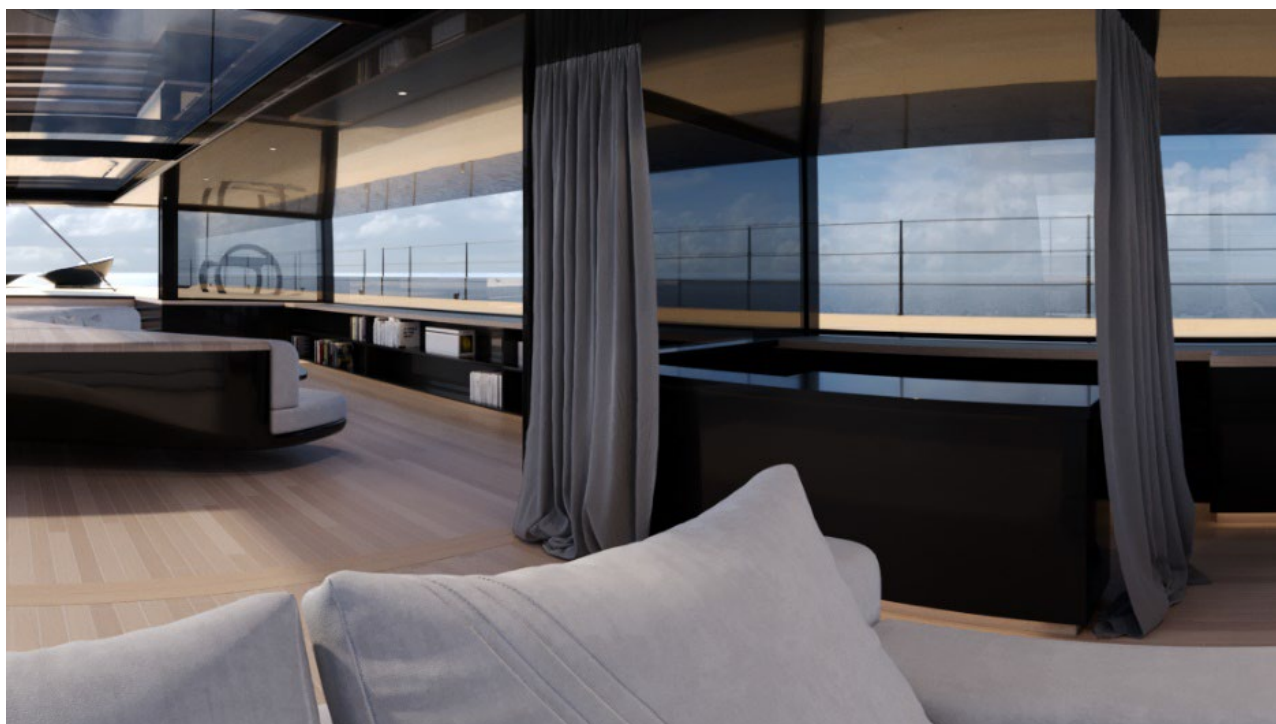
Continuous clear glass sides provide a virtually see-through exterior, while also acting as a principal, yet invisible, structural component. The 'white glass' employed is devoid of reflections. The overall effect is almost ethereal – a 'there but not there' trompe l'oeil that questions the presence of the superstructure and so adds emphasis to the lean, spare lines and reverse bow of the powerful hull.

PRESS RELEASE

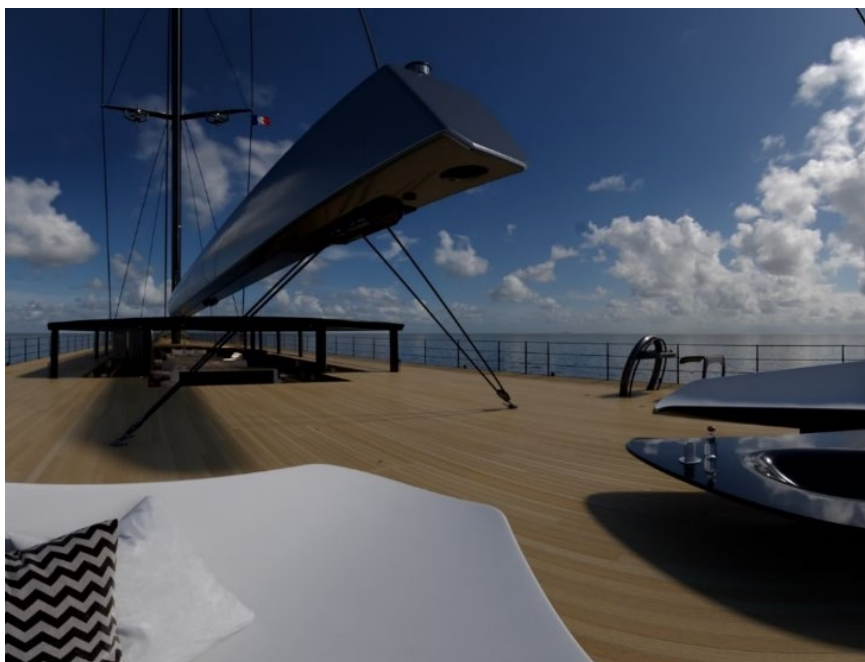


Before heading inside, you can't help but note the retro-style sculpted deck furniture and the impossibly minimal, achingly cool, helm stations.

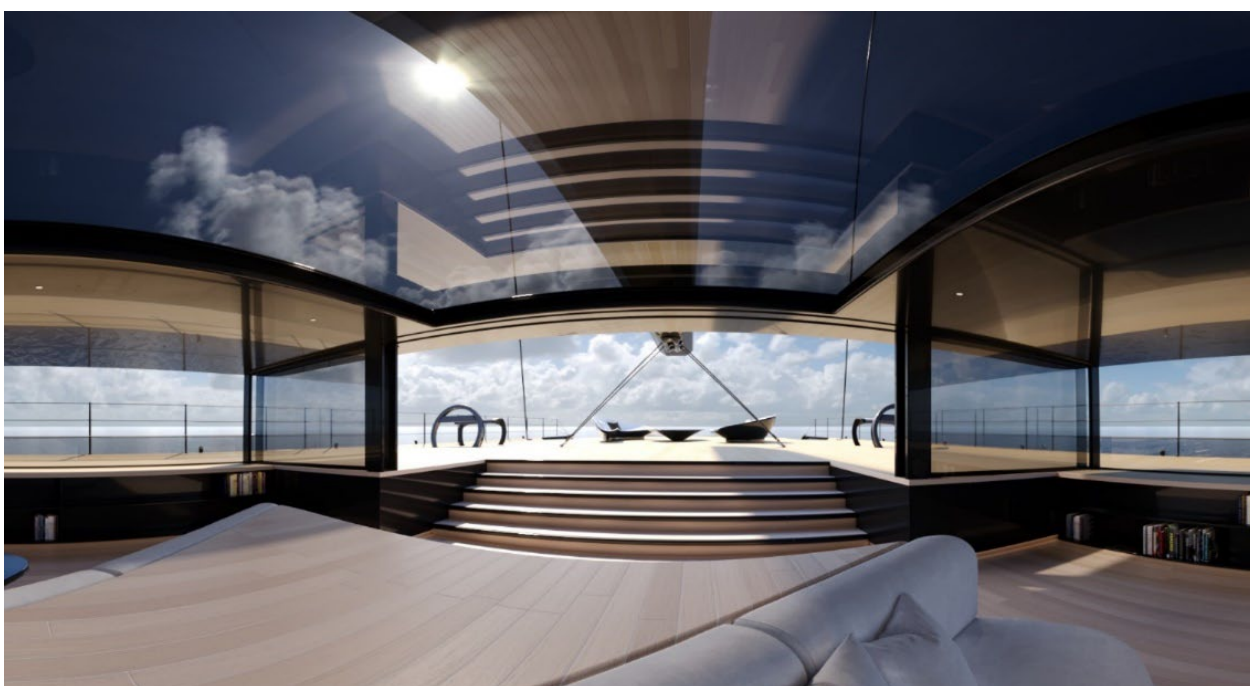
Stepping down beneath the aft canopy of the superstructure, you enter the extensive main cockpit area, complete with loungers and an impressive alfresco dining space.



PRESS RELEASE



YOU CANNOT HELP BUT ADMIRE THE IMPOSSIBLY MINIMAL, ACHINGLY COOL, HELM STATIONS. THEIR SPOKELESS WHEELS OFFER EFFORTLESS AND PRECISE MANOEUVRABILITY TO THIS BEAUTY THROUGH FLY-BY-WIRE CONNECTION TO THE TWIN RUDDERS

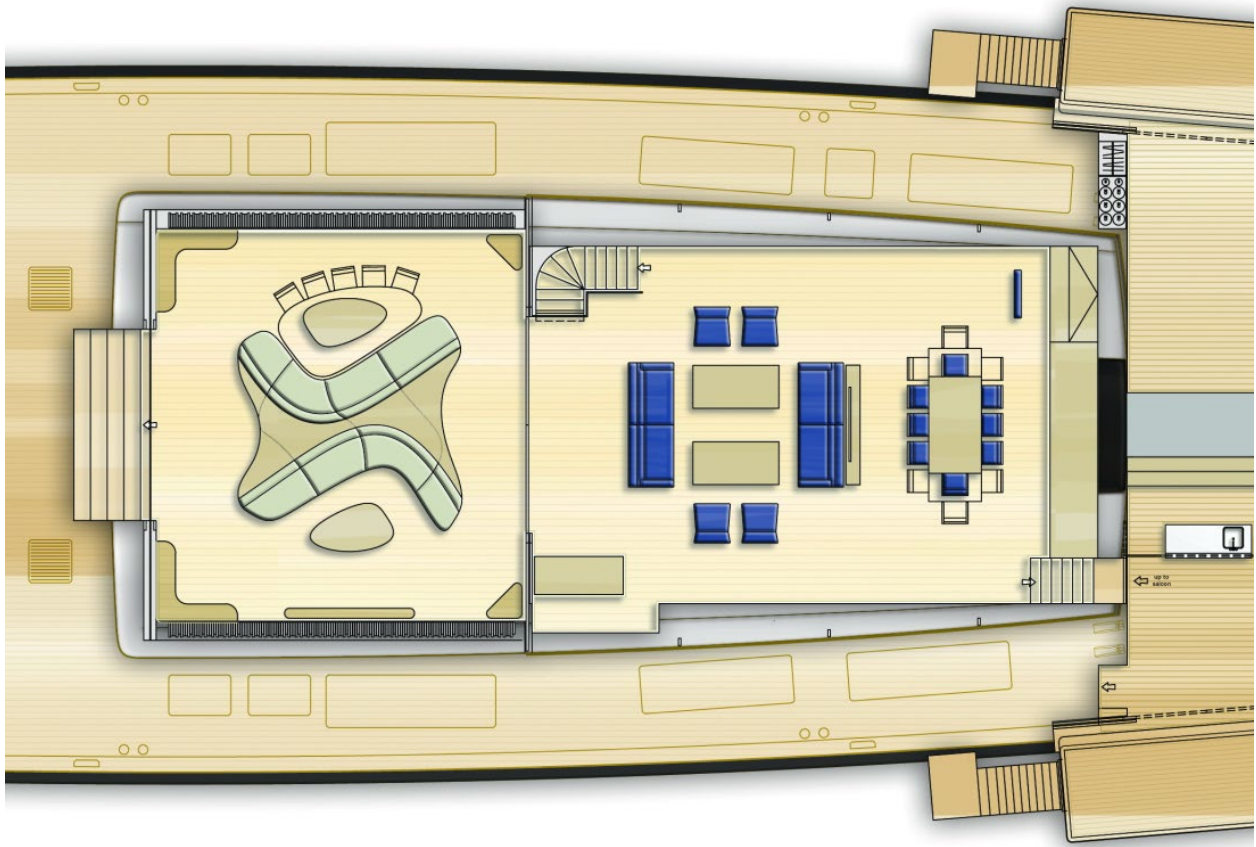


WITH FULL-BEAM ACCESS, THE SALOON OFFERS TRANQUIL AND SHELTERED RELAXATION. STAIRS CONNECT TO THE GUEST ACCOMMODATION AND THERE IS A NAV. STATION TO PORT. COCKPIT AND SALOON ENJOY A COMBINED 200M2 AREA ON A SINGLE LEVEL WITH 360-DEGREE VIEWS

PRESS RELEASE

Going forward, through full-beam access, the saloon is focused on tranquil and sheltered relaxation. To starboard, stairs provide a direct connection to the guest accommodation and to port there is a nav. station. The entire 200m² / 2150ft² area is on a single level, enjoying dramatic 360 degree views and a stunning sense of connection with the sea.

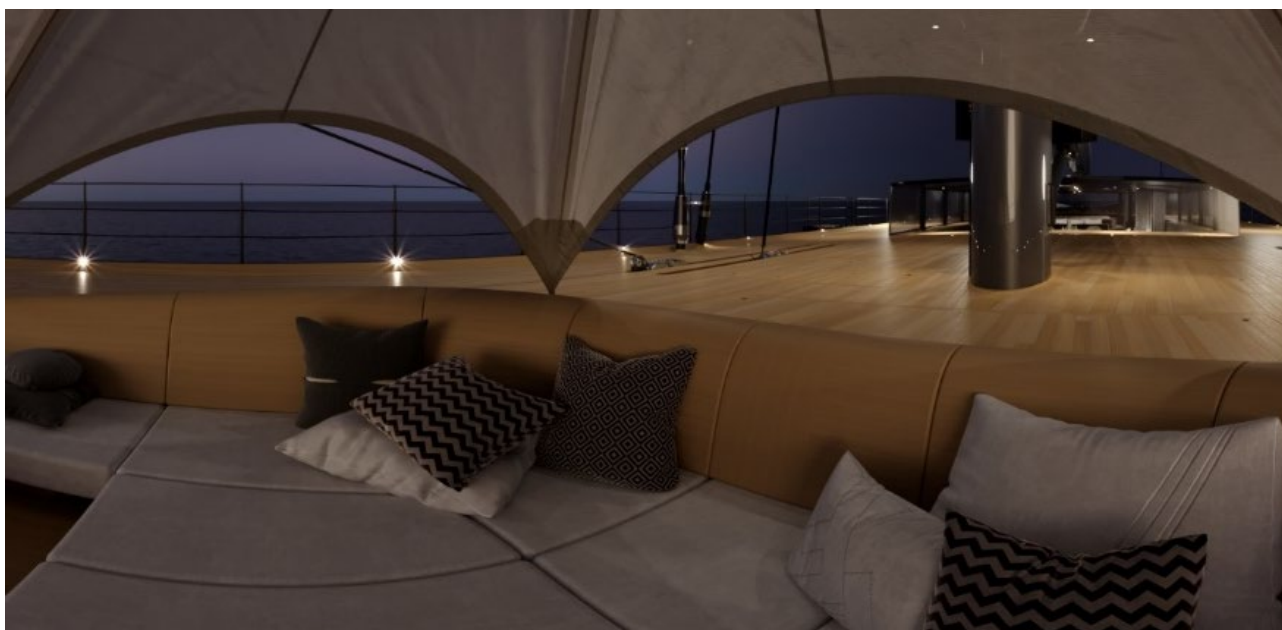
Sliding glass windows allow the cockpit to be totally enclosed from the weather while retaining that omnipresent view to the world outside. At anchor, even the double glass doors drop out of sight into hidden cassettes, allowing the superstructure to become the social hub for a vast party setting that spreads out over uninterrupted deck spaces running from stem to stern.



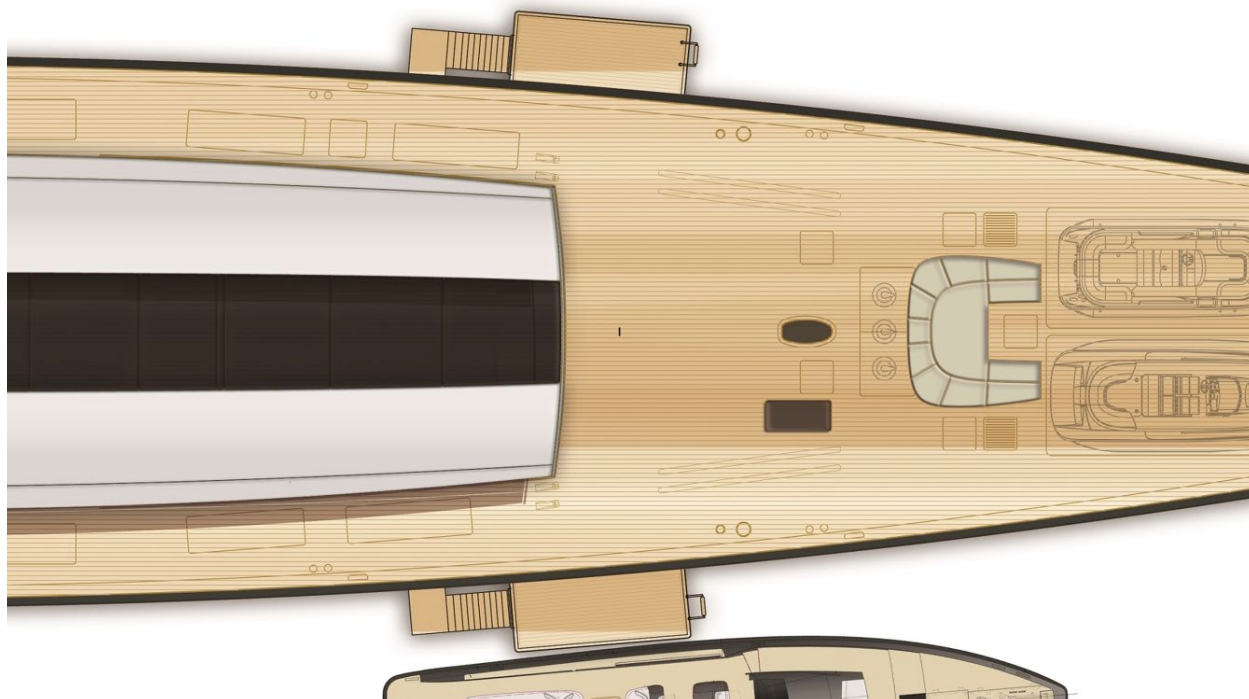
BENEATH THE AFT CANOPY OF THE SUPERSTRUCTURE YOU ENTER THE 100 M2 MAIN COCKPIT AREA, COMPLETE WITH LOUNGERS AND AN IMPRESSIVE ALFRESCO DINING SPACE. SLIDING WINDOWS AND DOORS ALLOW TOTAL ENCLOSURE FROM THE WEATHER WITHOUT LOSS OF THE SURROUNDING VIEWS

PRESS RELEASE





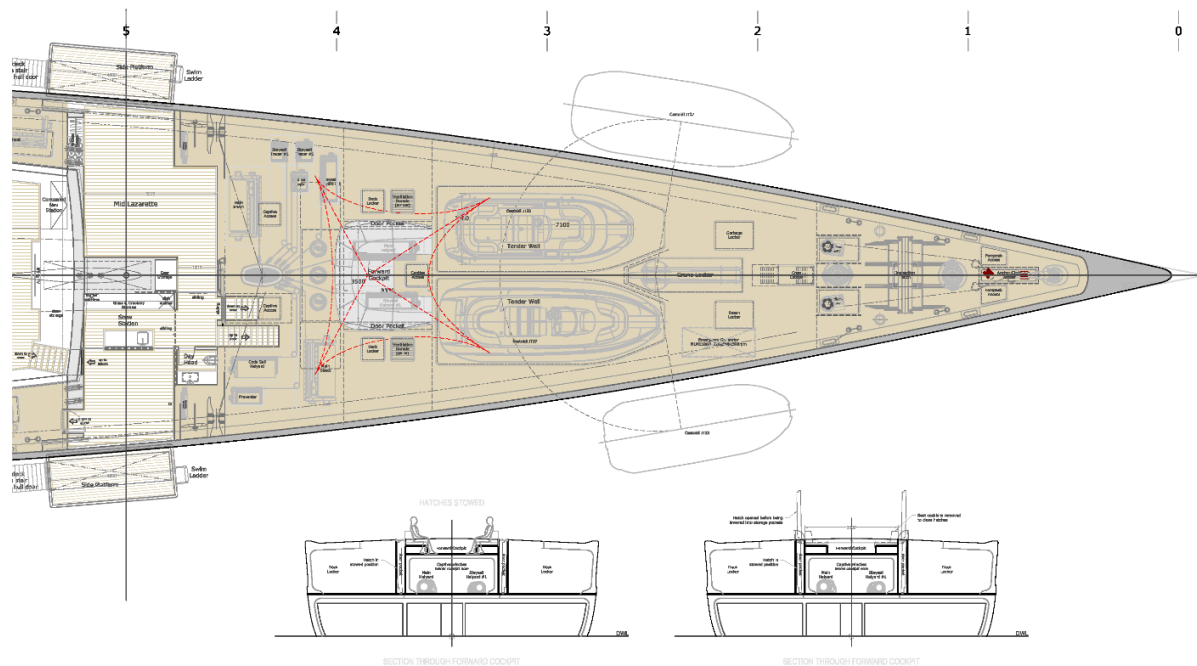
Just ahead of the mast, the forward guest cockpit is strategically sited to focus on the spectacle provided by the horizon and the yacht's fast motion towards it. Instead of focusing on the yacht itself, this intensifies the viewer's response to the surrounding sea and landscape. A snug and secure gathering space, it is sheltered by a Moroccan tent when the yacht is at anchor.





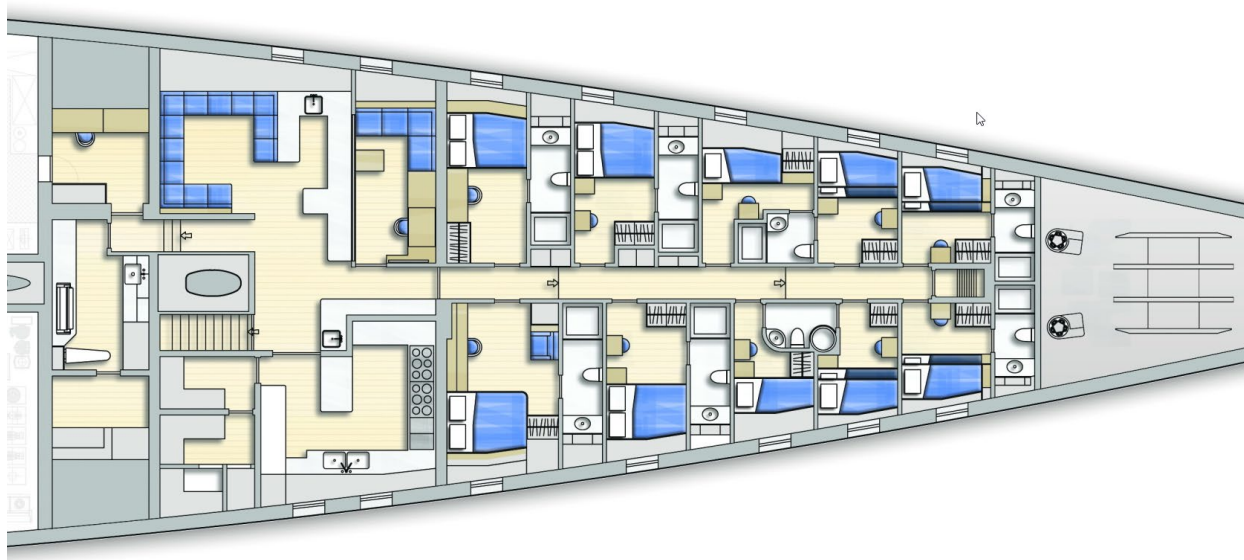
THE FORWARD GUEST COCKPIT IS STRATEGICALLY SITED TO FOCUS ON THE HORIZON AND THE YACHT'S FAST MOTION TOWARDS IT, A SNUG AND SECURE GATHERING SPACE FOR SMALLER SOCIAL GROUPS, IT IS SHADED BY A MOROCCAN TENT WHEN THE YACHT IS AT ANCHOR

PRESS RELEASE

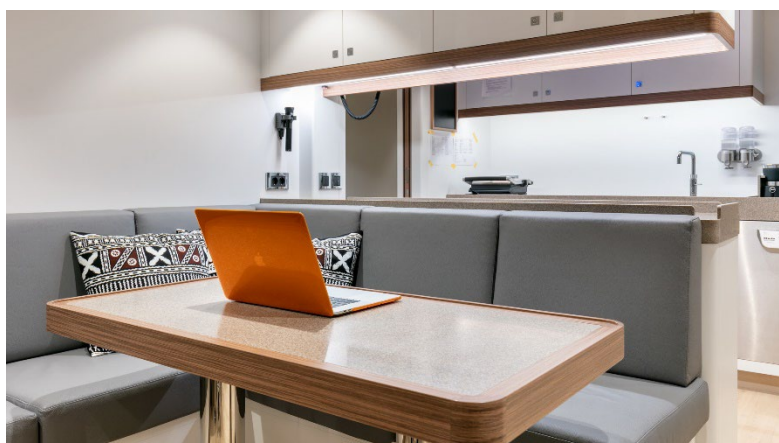


Immediately beneath the forward main deck are two large (8 m / 26ft) tenders, a launching crane and other storage for equipment.

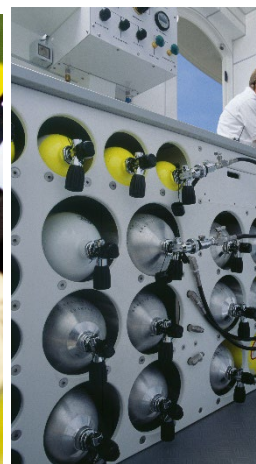
PRESS RELEASE



Below that (and on the same level as the guest quarters) are the crew quarters with mess, galley, storage and utilities. There is even space for relaxation and study. The brightly-lit, spacious area accommodates 14 crew in a flexible mix of double, twin and single cabins.



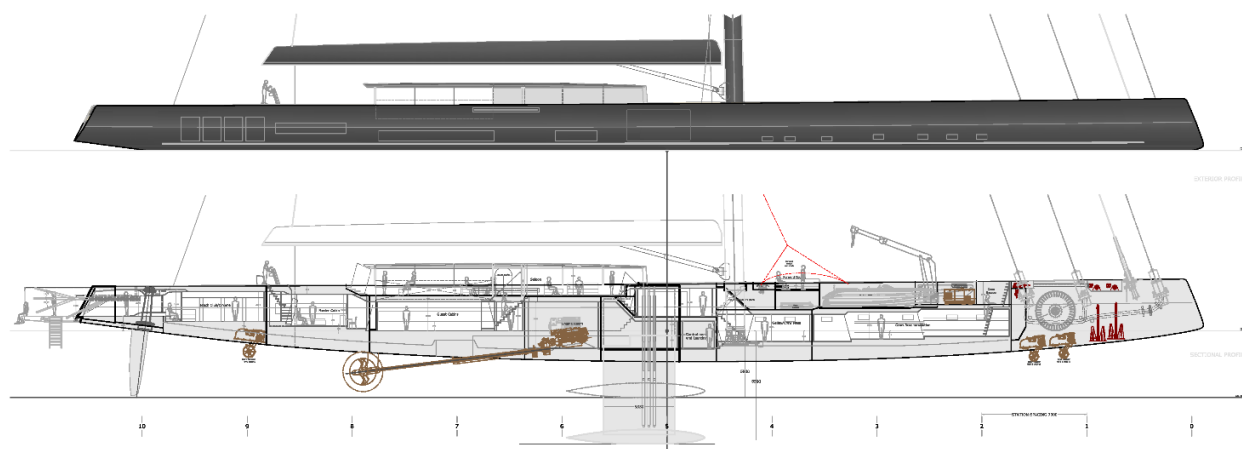
PRESS RELEASE



Is that everything? There's also a wine cave, a humidor for cigars, a private kitchenette in the owners' suite and a guest lobby with its own utilities. There's a 50 m² / 540ft² full-beam midships lazarette housing a day head, a servery, storage for diving equipment and toys, and access to the boarding / swim platforms. And much more besides...



PRESS RELEASE



PERFORMANCE, COMFORT AND SECURITY

The APEX 850's aluminium hull is immensely strong and resilient – lighter than steel, quieter than carbon and virtually corrosion-free. The powerful hull sections are complemented by twin carbon rudders and an 8.5m - 5.0m / 28ft - 16ft retractable keel for balance and stability as well as access to shallower harbours. Submarine anchors retract to fit perfectly into the contours of the hull.





The immensely powerful rig features a carbon mast and furling boom with continuous carbon rigging to support 3200m² / 34,444ft² of upwind sail area (main and blade) and 4700m² / 50,590ft² downwind (main and code sail). The wind's motive power is efficiently harnessed and managed by Rondal's Integrated Sailing System, with captive winches pulling up to 48 tonnes and controlled by advanced push-button technologies. Royal Huisman and sister company Rondal have unrivalled expertise in sail management systems for mega sailing yachts.

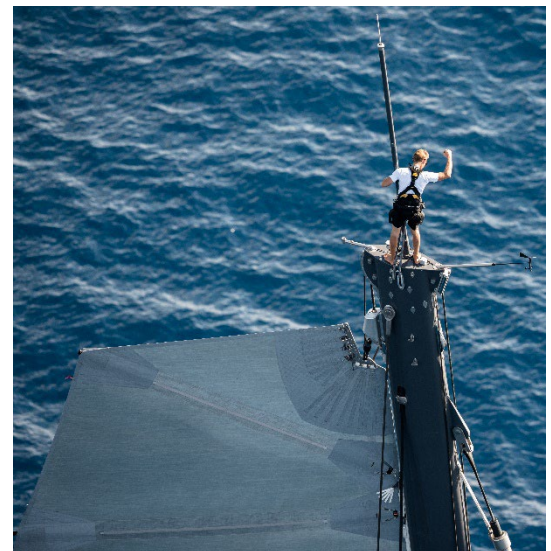


PRESS RELEASE

RIG AND SAILING SYSTEMS BY RONDAL

The clear choice when only the finest will do

The creation of the rig and sailing systems for a mega yacht of the power and scale of APEX 850 calls for the very highest level of expertise, innovation and experience. Rondal – sister company to Royal Huisman – is by far the world's most experienced and innovative composite mast and rig builder for sailing superyachts. With over 30 years' design and build evolution, Rondal is the go-to provider of composite masts, booms and rigs for the world's largest and most sophisticated sailing superyachts. Rondal has brought together a formidable team of experts from across the disciplines (within its own team and among industry partners) who work efficiently and knowledgeably together to develop the most advanced solutions, whatever the challenge.



PRESS RELEASE

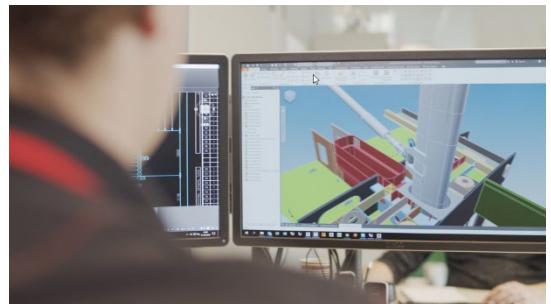
Innovative

From the very start, Rondal determined to build masts more smartly – in one piece rather than by joining two. This out-of-autoclave process enables ultimate shaping and strengthening refinements, with a profile uniquely optimised to each project. There has never been a Rondal mast failure. Rondal also led the way in the development of in-boom furling, introducing numerous operational advantages whilst also pleasing owners and designers with its 'style-to-order' boom profiles. Rondal captive reel winches, offering lighter, faster and more reliable operation, are another example of a restless drive for continual improvement.



Integrated Sail Handling Systems

With its broad range of expertise, it is natural that Rondal became an early developer of complete rig packages. These interface spars, rigging, winches and sailing hardware in a configuration expressly designed for each project. The benefits include ease of sail management, optimal ergonomics for efficiency and safety, plus, of course, the durability and reliability for which Rondal is renowned. The package also benefits from a strong emphasis on aesthetics, with the styling and execution of every detail in harmony with that of the yacht's overall theme – an important factor on a project as style-conscious as APEX 850.





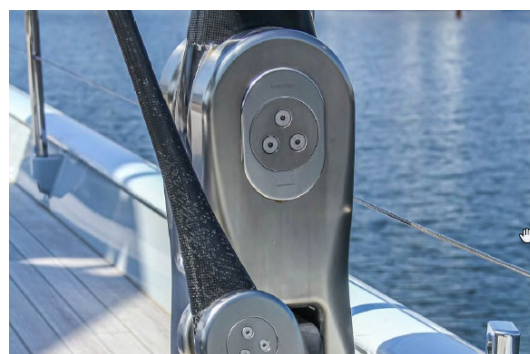
Details that count

With Dutch engineering precision, Rondal offers a sophisticated high-end aero package that optimises the balance between strength, stiffness and weight and reliably delivers within defined weight targets. The identification and suppression of potential vibration and harmonics from the rig are another example of a comprehensively professional approach.





Rondal has regularly partnered with CarboLink for its superior high-performance continuous standing rigging – a strong collaboration made yet stronger when viewed as part of Rondal's wider design and engineering team. This comprises a wealth of hands-on America's Cup, Volvo Ocean Race and Grand Prix sailing experience as well as exceptional strength in depth from leading design engineers, consultants, sailmakers and academics. All of this is backed by Quality Assurance in collaboration with Dutch Aviation & Aerospace Centrum (NLR) and Airborne Advanced Composite Manufacturing by Automation.



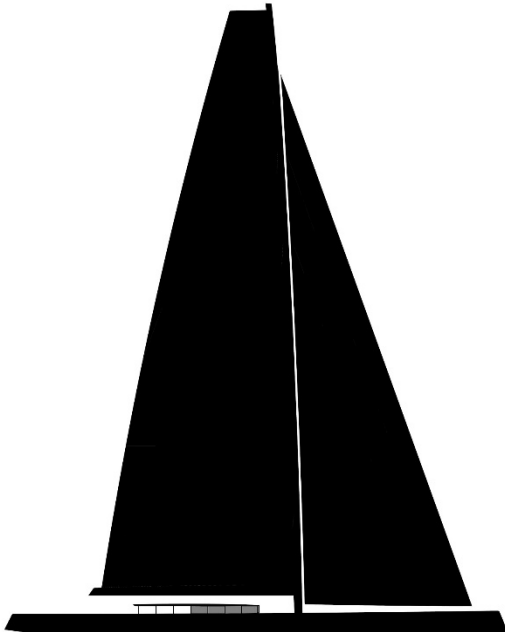


AT SEA, UNDER SAIL

Despite the high loads, the gigantic mainsail and blade headsail can be hoisted and sheeted within a few short minutes. In Silent Mode they can even be launched without starting an engine.

APEX 850 will quickly gather pace up to and beyond the prevailing wind speed and can easily reach speeds way in excess of 20 knots. The helm stations provide a clear line of sight over the low profile deckhouse, allowing the helmsman to navigate the yacht safely through mooring areas and scattered islands. APEX 850 is immensely manoeuvrable under main and blade jib and can even be tacked by the helmsman alone.

In the open sea, APEX 850 will sustain fast cruising speeds with comfort and security, thanks to her deep keel and optimised fore and aft weight distribution. Those fortunate enough to experience the exhilaration of sailing aboard this ocean giant as she cuts a perfect wake through tropical waters, will come away with memories to last a lifetime.



And, at the end of a blistering downwind run, who would not be lost in admiration to see a 2800m² / 30,138ft² code sail smoothly spilled of wind and drawn below decks without a hint of drama. On a giant spool, the sail is automatically ready for its next launch.

It becomes evident that the most important intricacies of this yacht reside not in her unparalleled lifestyle features and amenities but in the form and function of her use. APEX 850 naturally embodies unprecedented levels of modern luxury living. But her sailing prowess and the experience for those aboard while underway will always be paramount.

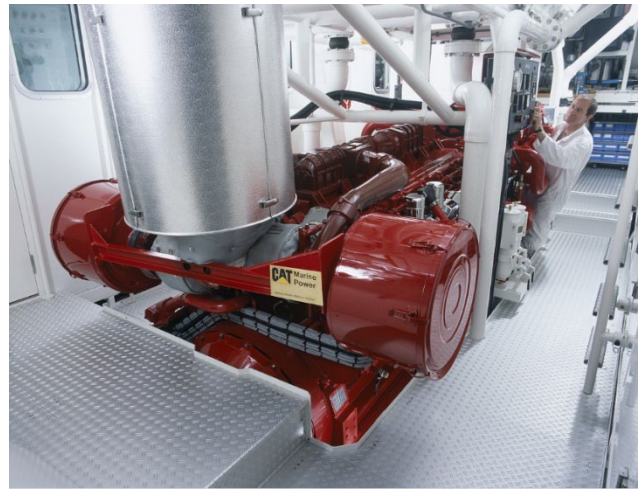
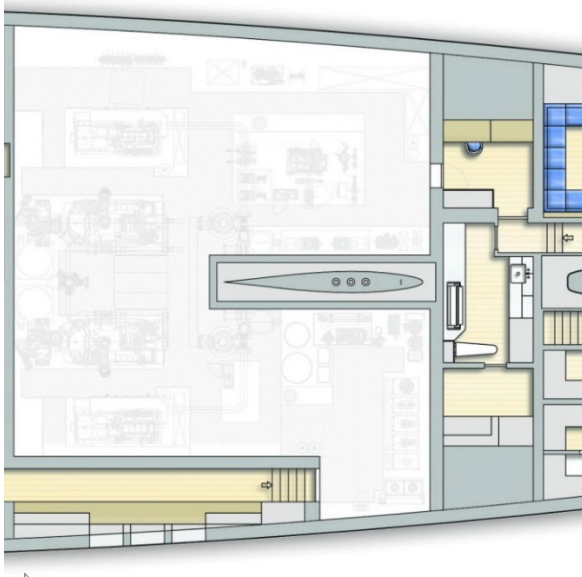


THE MAINSAIL AND BLADE HEADSAIL CAN BE HOISTED AND SHEETED WITHIN A FEW MINUTES. THE GIANT 2800 M2 CODE SAIL CAN BE SPILLED OF WIND AND DRAWN ONTO A GIANT SPOOL BELOW DECKS, READY FOR ITS NEXT LAUNCH. THE CREW MANAGE ALL FUNCTIONS VIA TOUCH



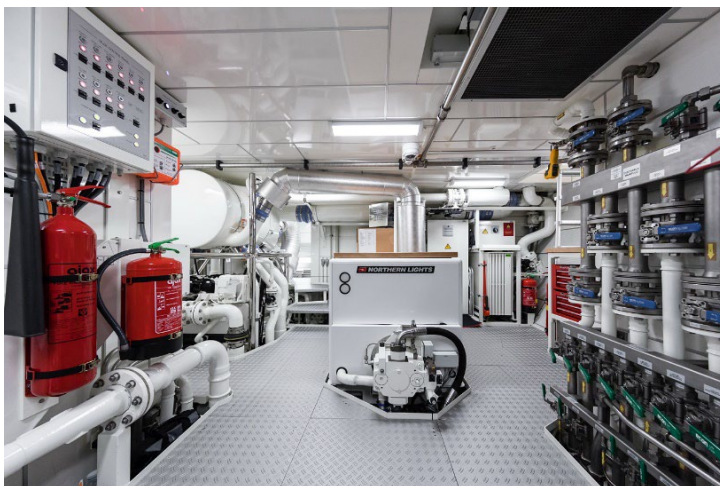
SCREEN AND REMOTE CONTROLLERS TO OPERATE
POWERFUL CAPTIVE WINCHES

APEX 850 WILL SUSTAIN CRUISING SPEEDS WAY IN
EXCESS OF 20 KNOTS IN COMFORT AND SECURITY,
THANKS TO HER DEEP KEEL AND OPTIMISED FORE AND
AFT WEIGHT DISTRIBUTION. THOSE FORTUNATE
ENOUGH TO EXPERIENCE THE THRILL OF SAILING
ABOARD THIS OCEAN GIANT WILL COME AWAY WITH
MEMORIES TO LAST A LIFETIME



PROPULSION AND ENERGY MANAGEMENT

Leading-edge diesel / electric propulsion and energy generation / management technologies are deployed to optimise energy efficiency and minimise environmental impact. Propulsion is via twin propellers, capable of generating energy under sail as well as drawing upon it under motor. Ship's energy demands are met by load-following generators and advanced battery bank reserves, all managed through a Smart energy management system optimising fuel efficiency while reliably meeting diverse loads from sailing and hotel systems. Stored energy is capable of meeting hotel services in Silent Mode overnight, substantially mitigating noise and exhaust pollution in pristine anchorages. The battery banks can also hoist sails for a silent departure.



PRESS RELEASE

AN ICONIC COLLABORATION

The innovators behind APEX 850 – Malcolm McKeon Yacht Design and Royal Huisman – come with a pedigree that hardly needs introduction to followers of the world's leading super-sailing yachts:

Malcolm McKeon Yacht Design

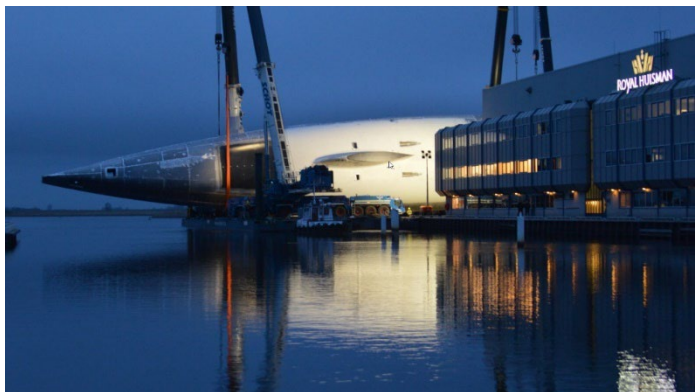
Recognised for the aesthetic quality of his designs, Malcolm McKeon has been a leading light in the creation of innovative superyachts for over 30 years, with more than 200 sailing and motor yacht projects successfully fulfilled – 50 in excess of 30m / 100ft. The 66m / 216ft mega-sloop Aglaia, in which Malcolm played a leading role, demonstrates the ability to tackle ambitious and innovative projects that are well ahead of their time. The team also has a high degree of specialisation in conceptual design, naval architecture and performance-related development through CFD (Computational Fluid Dynamics) and related techniques.

Malcolm McKeon: “When working at these scales, comfort and performance need never be compromised. Our evolution of the APEX 850 has allowed us to look beyond finding an ‘acceptable balance’ to focus, instead, on a heightened and indeed optimised partnership between each of these integral aspects of the concept.”



Royal Huisman

The ‘go-to’ Dutch shipyard for exquisite custom superyacht engineering and construction, Royal Huisman has built its reputation as an innovator and a perfectionist over more years than all of its immediate competitors combined.





Two Royal Huisman builds already feature among the world's ten largest sailing yachts – the 90m / 295ft schooner ATHENA and the 81m / 266ft contemporary three-masted schooner SEA EAGLE II.



APEX 850 would make a fitting stable-mate for these fine yachts and – like all Royal Huisman projects – would benefit from the research, innovation and challenges of the Royal Huisman yachts that went before, to become the finest yet.

PRESS RELEASE



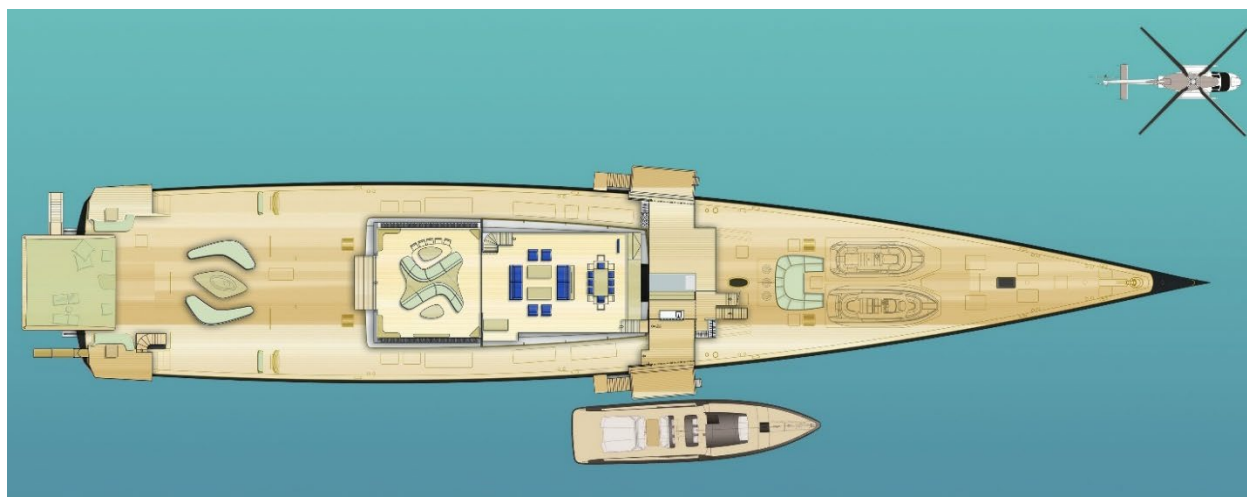
Almost every discipline involved in superyacht design and construction is represented within the nearly 300-strong Royal Huisman team located in purpose-built facilities at Vollenhove and Amsterdam. Royal Huisman CEO Jan Timmerman adds: “Two of the world’s ten largest sailing yachts, ATHENA and SEA EAGLE II, are Royal Huisman builds and APEX 850 would make a fitting third, easily becoming the largest member of this elite circle. Every Royal Huisman yacht benefits from the research, innovations and challenges of our previous builds, ensuring this would be the finest yet.”





THE ULTIMATE VIRTUAL EXPERIENCE

There is an amazing, stereoscopic Oculus 3D virtual tour of APEX 850 exclusively available to prospective owners. The depth of field and quality of presentation offered by this technology provide the viewer with the most extraordinary, fully immersive, experience of being aboard the world's largest sloop. Interested parties please contact Royal Huisman for access to the UNIQUE Oculus 3D experience. A preview can be found via the online 360 tour at the Royal Huisman website.





APEX 850 - THE WORLD'S LARGEST SLOOP

MAIN SPECIFICATIONS

Length overall:	85m / 279ft
Length waterline:	79m / 259ft
Beam:	15m / 49ft
Draft:	8.5m - 5.0m / 28ft - 16ft
Owners / guests accommodation:	10 - 12 in 5 suites
Crew accommodation:	14 in 10 cabins
Naval architecture:	Malcolm McKeon Yacht Design
Interior:	Owners' preference
Builder:	Royal Huisman
Construction:	Aluminium
Classification:	Lloyd's + REG Large Yacht Code
Rig and sail handling:	Carbon mast, boom, rigging and integrated sailing system by Rondal
Sail area:	3200m ² / 34,444ft ² (upwind) - 4700m ² / 50,590ft ² (downwind)
Air draft:	107m / 351ft

DESIGNER'S AND BUILDER'S COMMENTS

Video: <https://vimeo.com/456228200/b31c42bbb3>



YOUR INDIVIDUAL DREAM

Technically, APEX 850 is a fully resolved concept. The dedication of hundreds of man-hours by the team's naval architects, designers, engineers and other specialists mean that up to two years' development time will be saved by the visionary owner who takes the project forward.

Yet there remains extensive scope for an owner to incorporate their own ideas and apply their creativity to realise a personal vision for APEX 850. Whether exploring external hull and deck styling, interior layout and design, choice of propulsion technologies or other possibilities, the Malcolm McKeon / Royal Huisman team are ready to discuss your ideas and help translate them into reality. As we like to say at Royal Huisman: "If you can dream it, we can build it".

Just ask us about the possibilities.

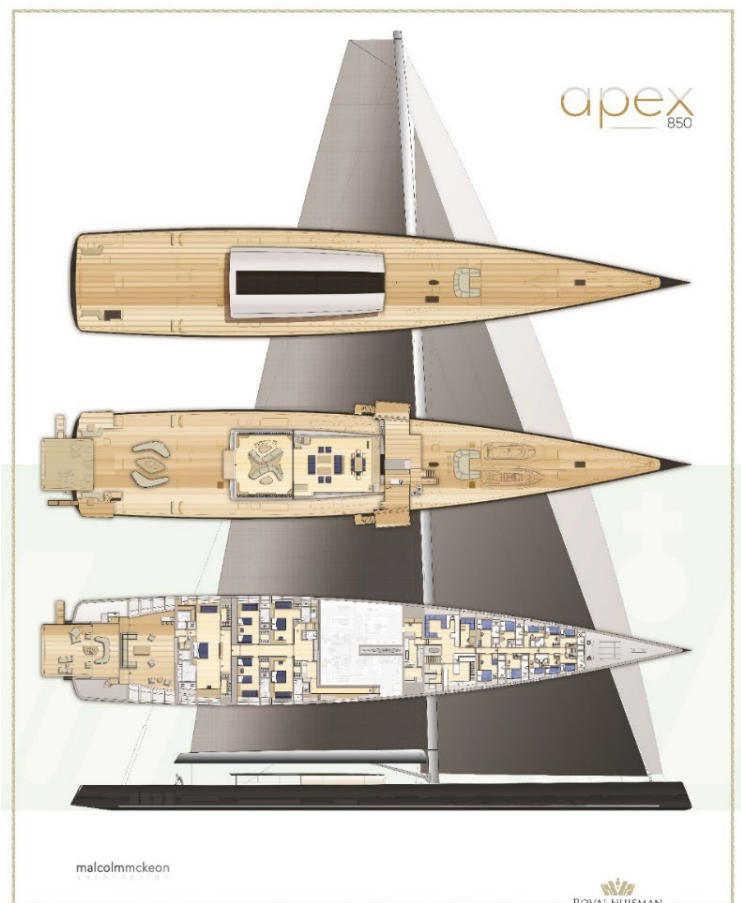
PRESS RELEASE

LAST, BUT NOT LEAST

As you might know Royal Huisman works closely with our clients and members of the yachting press. We do this to give all our media friends equal support and opportunity. Please introduce us to new press colleagues: we will be pleased to assist them and add their contact details to future press releases.

The images from this press release can be available on request. Please respect the following:

- The information and illustrations are for media or press publications only.
- Publication of images should acknowledge the creator. Note the file name of each image contains the creator's name.
- For any questions, please contact Jurjen van 't Verlaat (jurjen@royalhuisman.com or +31 527 243131).



Can you please send us a high-res pdf of the final article or link to the website page after publication? Feel free to also send your draft text for review or fact checking before publication.