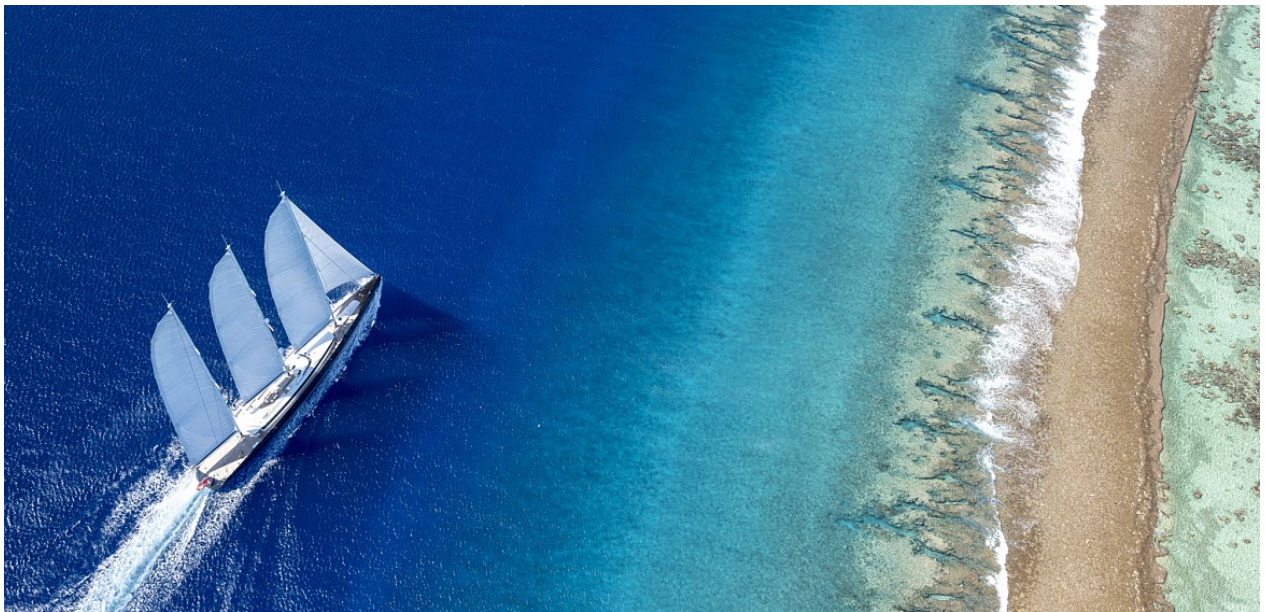


P R E S S R E L E A S E

TRIDENT 810: a true world cruiser is ready to build

Following the recent world premiere of project AERA at the Monaco Yacht Show, Royal Huisman is proud to present TRIDENT 810, a series of 81m / 266ft overall length derived from the proven architecture of Royal Huisman's flybridge schooner.



Royal Huisman, known for being a true custom shipyard, turns dreams into singular yachts with design excellence, quality and unmatched craftsmanship. TRIDENT 810 is the next step in the pursuit of the perfect custom XXL true-sailing superyacht. Rather than reinventing, it builds on the very best of what has already been achieved, offering owners and crew the rare opportunity to embrace a yacht that is both the essence of Royal Huisman and a true expression of their individuality.

TRIDENT 810 has dramatic and purposeful contemporary lines with a plumb bow. She is designed by Dykstra Naval Architects and Mark Whiteley Design. The very long waterline and powerful Panamax rig of TRIDENT 810 ensure effortless, mile-eating performance.



Despite her massive sail area (upwind: 2,580sqm / 27,770sqft), all three mainsails can be hoisted simultaneously in no more time than it would take to hoist the sails on a yacht half her size. The efficiency of this advanced sail management system reflects the immense technical innovation behind it.

What truly sets her apart is the effortless control she offers: an all-aluminum yacht of this magnitude can be sailed with the simplicity of a much smaller vessel. Such intuitive sail management redefines expectations and broadens horizons - even the most dedicated motor yacht owners will be tempted by the allure of a sailing yacht when they discover how seamlessly and enjoyably she can be sailed and with the significant efficiency advantage of free propulsion power (the wind).

PRESS RELEASE



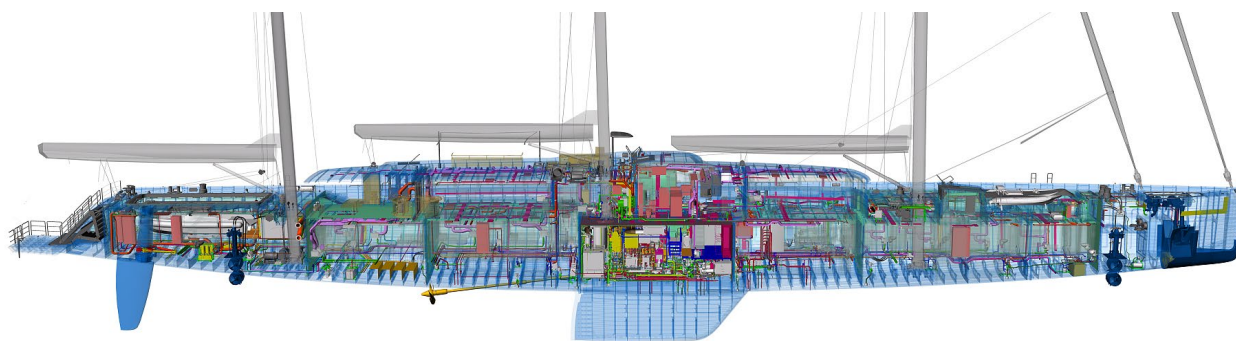
VOLLENHOVE, THE NETHERLANDS: HOME TO THE WORLD'S FINEST SUPERYACHT BUILDING

TRIDENT 810 builds upon a proven architecture, ensuring that the foundation of the yacht is already engineered to the highest Royal Huisman standards. Developed in-house and equipped exclusively with the finest onboard systems, TRIDENT 810 guarantees outstanding performance, long-term durability, and intelligent layouts designed for seamless serviceability.

Having the original delivered in 2020 and the second one under construction, owners benefit both from a reliable, short project lead time: the opportunity to personalize and realize a fully bespoke superyacht, delivered in just three years. This unique approach combines the assurance of tried and tested excellence with the freedom to create a yacht that reflects individual vision - an exceptional blend of reliability, efficiency, and true custom expression. Alternative profiles and available layouts are available on Royal Huisman's website.

END OF PRESS RELEASE

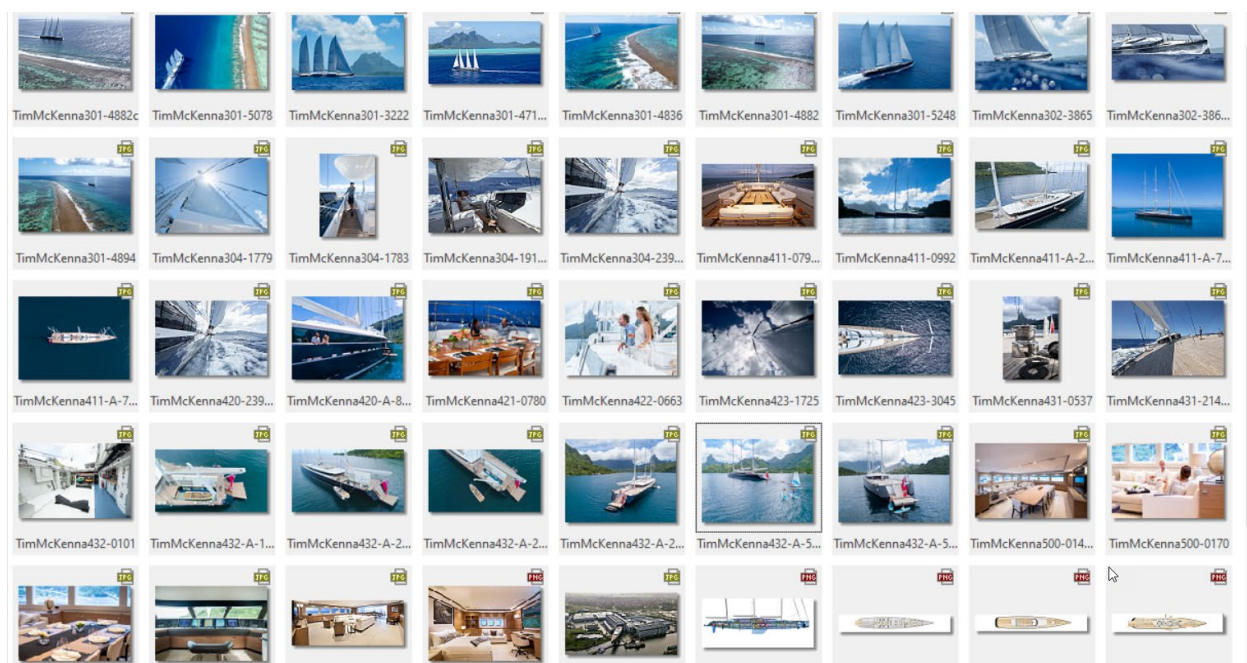
EDITOR'S NOTES



MAIN DATA TRIDENT 810

Naval architect:	Dykstra Naval Architects
Design:	Dykstra Naval Architects + Mark Whiteley Design
Interior:	Mark Whiteley Design
Length overall:	81.0m / 266ft
Beam:	12.3m / 40.5ft
Draft:	6.0m / 19.7ft
Accommodation:	12 owners / guests + 14 crew
Construction:	Aluminum
Main engines:	Caterpillar 2x C32 (1081kW)
Generators:	Caterpillar 2x C7.1 (120kW) + 1x C4.4 (88 kW)
Battery system:	130kWh for peak shaving
Rig + handling:	Rondal carbon rig + Integrated Sailing System
Air draft:	61.8m / 202.5ft (Panamax)
Build time:	3 years
e-Brochure:	royalhuisman.com > yachts > ready to build [link]

PRESS RELEASE



LAST, BUT NOT LEAST

As you might know Royal Huisman works closely with our clients and members of the yachting press. We do this to give all our media friends equal support and opportunity. Please introduce us to new press colleagues: we will be pleased to assist them and add their contact details to future press releases.

The images from this press release are available on request. Please respect the following:

- “Let the yacht be the hero”: the owners of the Royal Huisman yachts respectfully ask that their names, nationality, occupation and all additional references to their personal lives should be excluded from all articles printed, online or otherwise.
- The information and illustrations are for media or press publications only.
- Publication of images should acknowledge the photographer / creator. Note the file name of each image contains the creator's name.

For any questions, please contact Jurjen van 't Verlaat (jurjen@royalhuisman.com or +31 527 243131). Can you please send us a high-res pdf of the final article or link to the website page after publication? Feel free to also send your draft text for review or fact checking before publication.