

A T R U E W O R L D C R U I S E R



— T R I D E N T | 810 —



ROYAL HUISMAN





SINCE 1884

## THE ULTIMATE EXPRESSION OF PERSONAL FREEDOM

---

For discerning individuals with a dream to realize, Royal Huisman – a true custom shipyard – can bring that dream to life with a yacht unique in conception, quality, and execution.

Hearing “It’s a Royal Huisman!” is self-explanatory: yachts renowned for unmatched craftsmanship, distinctive design, and award-winning excellence.

It was from this ethos that the **Trident 810** was born: inspired by the culmination of our pursuit of the perfect custom yacht. **Trident 810** represents the natural evolution of this achievement – a serie that embodies proven excellence, distilled craftsmanship, and innovation refined to its purest form. Rather than reinventing, it builds upon the very best of what has already been accomplished, offering owners the rare opportunity to embrace a yacht that is both the essence of Royal Huisman and a true expression of their individuality.



# PASSION FOR PERFECTION

Royal Huisman blends twenty-first century technology with traditional craftsmanship. Passion for perfection is at the heart of everything we do – defining quality not only in our yachts, but in every aspect of service, care, and communication. This enduring commitment ensures that each Royal Huisman creation is more than a yacht: it is the essence of excellence.



60m High-performance sloop Sarissa - Winner of 10 awards





## CREATING THE EXCEPTIONAL

Creating an exceptional yacht from a dream is an exciting challenge for skilled minds and hands. With decades of experience, Royal Huisman excels in delivering high-performance superyachts of every type. The shipyard's approach combines a unique flexible range of skills, drawing on both in-house expertise and specialist partners to continuously expand its intellectual capital and achieve the extraordinary.

The **Trident 810** embodies this very philosophy. It is conceived and built with the same dedication, methodology, and passion that define every Royal Huisman project: blending innovation with craftsmanship, proven performance with individuality. **Trident 810** reflects the evolution of the pursuit of perfection - offering owners a yacht shaped by experience, driven by excellence, and brought to life by the uncompromising standards of Royal Huisman.





## INTELLIGENT ENGINEERING

The “invisible assets” of Royal Huisman are the expertise and experience of its team, which consists of more than 350 people with different skills, languages and nationalities, all sharing the same passion for perfection and innovation. Each employee is proud to work at the shipyard, creating some of the finest superyachts on the oceans.

Capacity-wise, the shipyard is now more flexible than ever before, working in close collaboration with selected and highly qualified comakers. These partnering companies work closely together with Royal Huisman’s in-house team at its two facilities located in the heart of the Dutch maritime services cluster.

This integrated approach combines design, engineering, craftsmanship, and project management within a proven quality framework, ensuring even the most challenging projects are realized to the highest standard. By leveraging intellectual capital, advanced infrastructure, and trusted partnerships, Royal Huisman delivers yachts defined by excellence, supported throughout their lifetime by dedicated service to owners and crew.





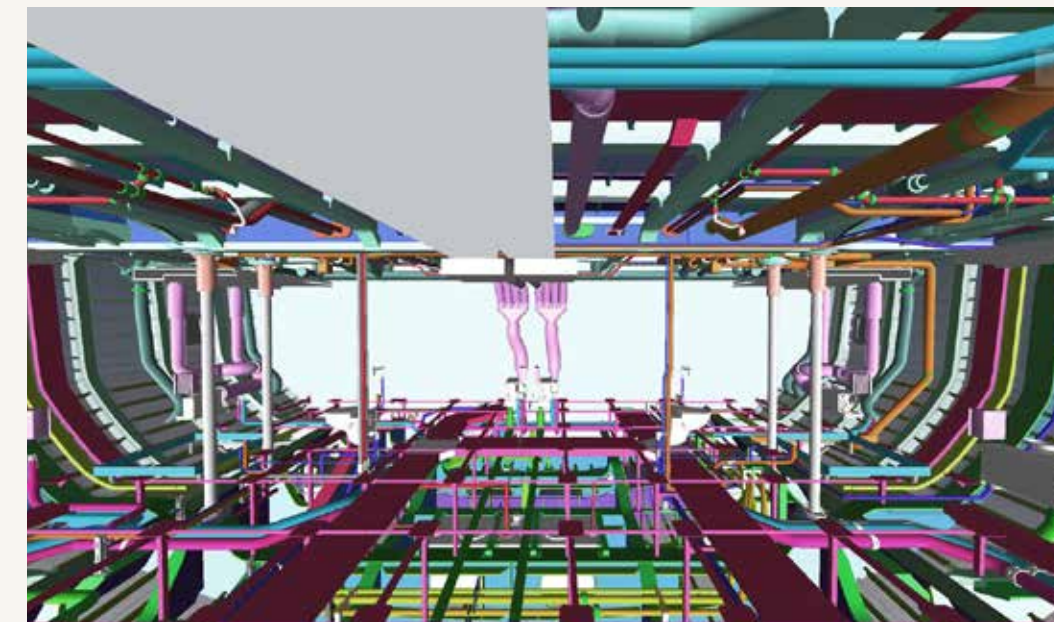
## FROM VISION TO CONCEPT

This experienced team uses advanced software and full-scale mock-ups to explore, develop, and optimize client and designer ideas. Their tools — whether 3D, 2D, or physical mock-ups — identify and resolve spatial issues before construction begins. This ensures complete integration of the owner's lifestyle objectives with engineering and operational requirements, achieving higher quality, reducing costs, and preventing future regrets.

## FROM CONCEPT TO REALISATION

Translating concept to engineering involves meticulous tasks such as routing pipes and cables, setting up systems like alarms, security, hydraulics, and power, all tested rigorously before installation. Interior furniture is pre-assembled to ensure perfect finish and functionality.

Royal Huisman's composites department creates innovative components, enhancing the power-to-weight ratio crucial for sailing performance. Exact planning, supported by the shipyard's Concurrent Design & Engineering and Stage Gate program, ensures a new oceangoing vessel takes shape seamlessly. Nothing is left to chance.



## FROM REALISATION TO FULFILMENT

Creating an exceptional custom yacht from a dream is an exciting challenge for skilled minds and hands. With decades of experience, Royal Huisman excels in building high-performance racing yachts, cruising yachts, and luxury superyachts. Their approach integrates a flexible range of skills, optimizing both their team and specialist partners to enhance the shipyard's intellectual capital.





# INNOVATION

## IN VARIOUS AREAS

Over the years, the shipyard team developed many smart solutions, several of which became industry-trendsetters. Research and development re-shaped industry practices and has always been the backbone of the Royal Huisman's success.

One example is the pioneering use of aluminum for yachts and race boats in the 1960s, 70s and 80s. Another is Ethereal, the world's first hybrid superyacht and launched by Royal Huisman in 2008.

### SUSTAINABILITY

Smart energy concepts and sustainable materials are used on new and existing yachts, in order to minimize their impact on the environment and climate. Currently, future propulsion and various sustainable materials are being researched.

### FEATHERLIGHT™

The Featherlight™ program is an approach aimed at saving weight and contributing to improved performance and lower fuel consumption. This methodology was cleverly developed by the shipyard's inhouse R&D team, backed up by 60 years of experience with aluminum construction. Featherlight™ combines the best of both worlds: performance and luxury.

### SAILING SYSTEMS

Royal Huisman, together with Rondal, is constantly innovating and developing new rig concepts that enhance performance, simplicity, and functionality, enabling a more sustainable use of yachts..

A fine example is the research into a next generation of thin-walled solid wing sails, currently being undertaken by the shipyard, sister company Rondal, and development partner Artemis Technologies. The wingsail holds a rigid shape which leads to efficient wing profiles and for example a lower heeling moment for the same forward thrust. Flaps are used to alter the camber, which can control the power of the wind via an automated system. The system is very user friendly, comfortable and safe.





## TRIDENT | 810

Her very long waterline and powerful Panamax rig ensure effortless, mile-eating performance. Despite her massive sail area, all three mainsails can be hoisted simultaneously in no more time than it would a yacht half her size. The efficiency of this advanced sail management system reflects the immense technical innovation behind it.

What truly sets her apart is the effortless control she offers: a yacht of this magnitude can be sailed with the simplicity of a much smaller vessel. Such intuitive sail management redefines expectations and broadens horizons - even the most dedicated motoryacht owners will be tempted by the allure of a sailing yacht when they discover how seamlessly and enjoyably she can be sailed.

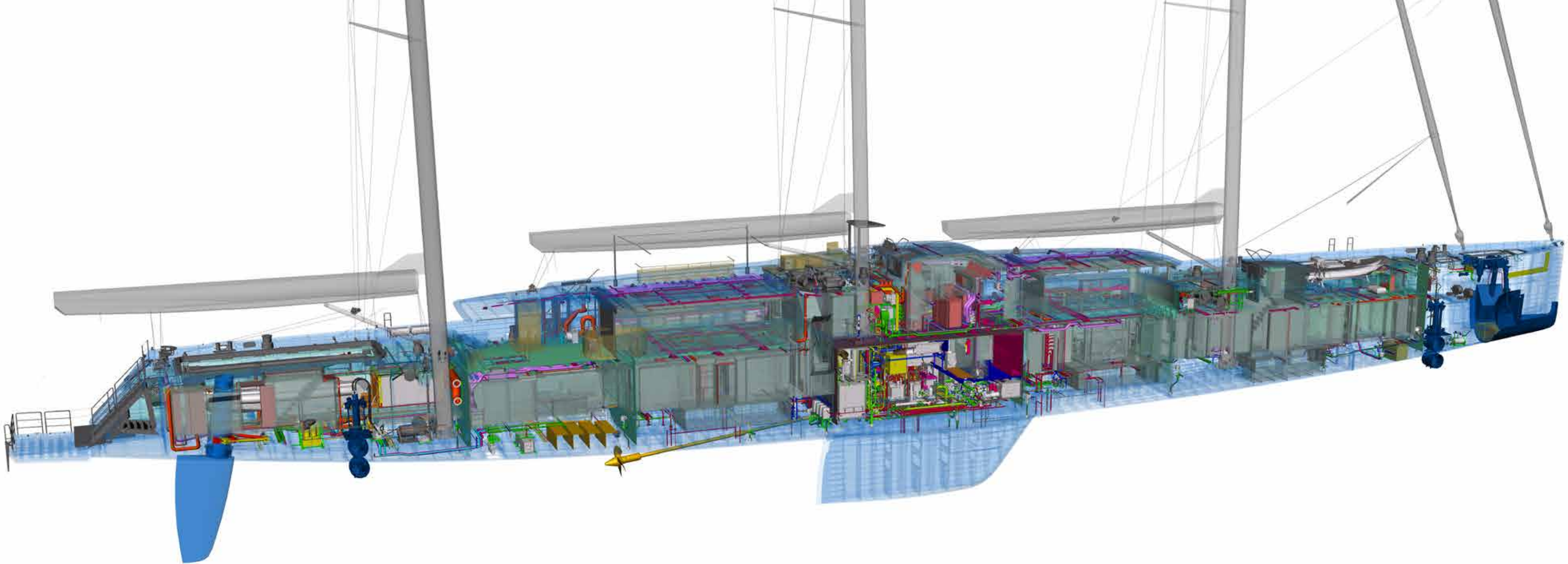




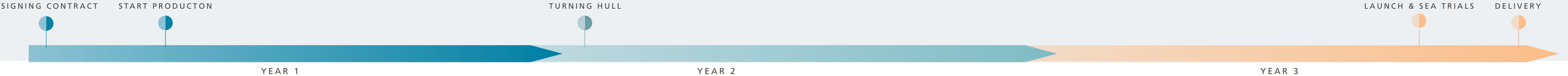
PROVEN  
TECHNOLOGY

The **Trident 810** builds upon a proven platform, ensuring that the foundation of your yacht is already engineered to the highest Royal Huisman standards. Developed in-house and equipped only with the finest onboard systems, **Trident 810** guarantees outstanding performance, long-term durability, and intelligent layouts designed for seamless serviceability.

Because the complete engineering package already exists, owners benefit both from a reliable and short project lead time: the opportunity to personalize and realize a fully bespoke 80m+ (262ft+) superyacht, delivered in just over three years. This unique approach combines the assurance of tried-and-tested excellence with the freedom to create a yacht that reflects individual vision - an exceptional blend of reliability, efficiency, and true custom expression.



PROJECT LEAD TIME









THE RIG

The three Rondal carbon masts, each a little taller going from bow to stern, have a Panamax clearance. Each masts is built as one piece. This out-of-autoclave process enables ultimate shaping and strengthening refinements. The profiles are custom tailored to each project. The high modulus carbon fibers run continuously from mast head to heel, optimizing weight, strength and stiffness and guaranteeing robustness.



INTEGRATED SAILING SYSTEM

The sail plan is managed by Rondal's Integrated Sail Handling System, which seamlessly connects spars, rigging, winches and other sailing hardware.

**RONDAL**  
ULTIMATE RELIABILITY



## SCULPTURED BOOMS

The carbon fiber roller furling booms, captive reel & drum winches, and flush deck hatches are manufactured by Rondal as well. Continuous carbon fiber standing rigging is supplied by Carbo-Link. The expert advisory team for the rig project comprises captain and the owner's representative, Doyle Sails, Dykstra Naval Architects, Carbo-Link and the Royal Huisman team.









## FLYBRIDGE DECK

Centered around the open deck spaces, the long, low glass superstructure is complemented by a sleek flybridge.

The flybridge deck provides a spacious leisure and entertainment area for the owner and the guests; or for the owner to helm from one of the dedicated exterior helm stations, styled to blend into the surrounding superstructure.







## THE FLYBRIDGE

The helmstation is an exceptional vantage point for the helmsman to assess the trim of the sails and to communicate with deck crew.







## THE FLYBRIDGE

Whether at anchor or cruising, the flybridge is an important social hub for the owner and guests. Easily accessed from stairs either side of the al fresco bar and dining area, the flybridge offers stunning 360-degree views of the surrounding seascape.



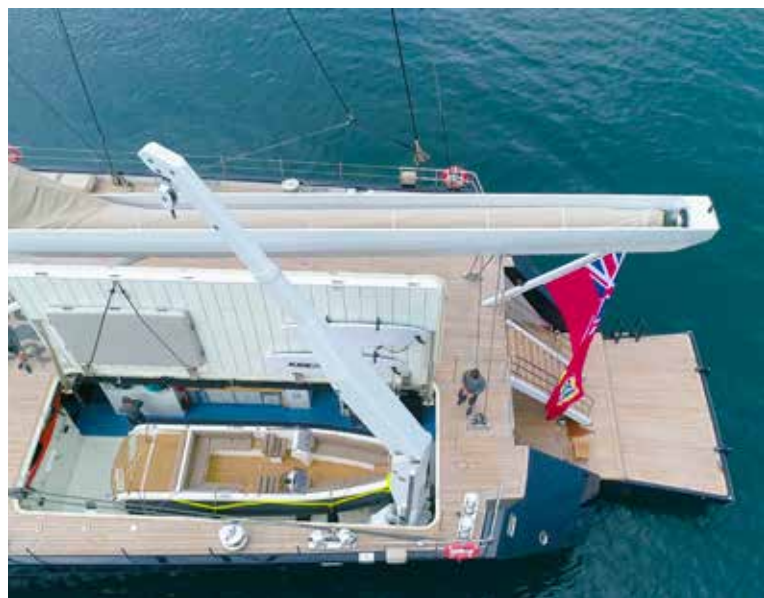
## ALTERNATIVE LAYOUT

Dinner setting









## AFT DECK

One will experience the benefits of a large opening hatch in the aft deck, providing easy access to a spacious, functional and well-organized lazarette.

The aft deck houses a stern platform with concealed steps, an 8m / 26ft guest tender, a large crane, water scooters and dive gear as well as a vast range of other equipment and storage.



LARGE  
TENDER HATCH

above 8m / 26ft guest tender

STERN PLATFORM

with grand steps and  
access to the lazarette





#### BOARDING PLATFORMS

Access to the deck and interior is via foldout boarding platforms on both portside and starboard.

The sense of size and space when arriving on deck is powerful.  
The long, perfectly proportioned superstructure makes an impressive statement.





## AL FRESCO DINING

The al fresco dining area beneath the aft overhang intimates relaxed dining.

The interior and exterior decks are completely flush and separated with sliding glass panels without a threshold to step over.

Each individual panel does not open in the center like conventional sliding doors, allowing for maximized comfort and flexibility. The panels are invisibly stored in their garage when opened, or perfectly sealed when the weather demands their closure.

Stairs either side of the dining area lead to the flybridge above.







## FORE DECK

Forward of the superstructure and the foremast is the sheltered, low-profile entrance to the crew quarters

Immediately ahead, a large bay shelters a 5m / 16ft crew and rescue tender. When the tender is in the water, the open bay has an important secondary role as a tucked-away socializing space for the crew.





## EFFORTLESS POWER, SEAMLESS SAILING

With cutting-edge sail management systems and exceptional hydraulic power, **Trident 810** enables all three mainsails to be hoisted simultaneously - effortlessly. Ready to sail straight off the hook, she outpaces expectations with astonishing ease.

Even in moderate wind, she swiftly accelerates, maintaining high speeds with a steady heel and remarkable onboard comfort. Reaching over 22 knots feels deceptively relaxed - smooth, safe, and exhilarating. Every mile sailed is a testament to precision engineering and pure pleasure at sea.

## HALF RAISED BRIDGE

Between the flybridge helm station and the main deckhouse below is an interior bridge from which the vessel can be commanded in heavy weather.





## MAIN SALON

A visitor stepping down from the al fresco dining area into the deck salon will find themselves immersed in a calm and reassuring environment. This is an expansive amenity, flooded by natural light and providing a choice of relaxed social spaces. There is informal seating close to the large media screen forward and around the U-shaped 'inner half' of the inside/outside bar. Beyond the entry lobby, further forward on the same deck level, resides the formal dining and leisure area.







MAIN ENTRANCE

FORWARD SALON

## PANORAMIC OUTLOOK

The curved, forward windscreen offers guests a stunning panoramic view.





OWNER'S / GUEST  
ACCOMMODATION

Stairs aft of the lobby area lead to the owner's and guests' accommodation below – also on one level – where five superbly appointed suites offer boutique hotel-quality amenities for up to two owners and eight guests.

OWNER'S SUITE





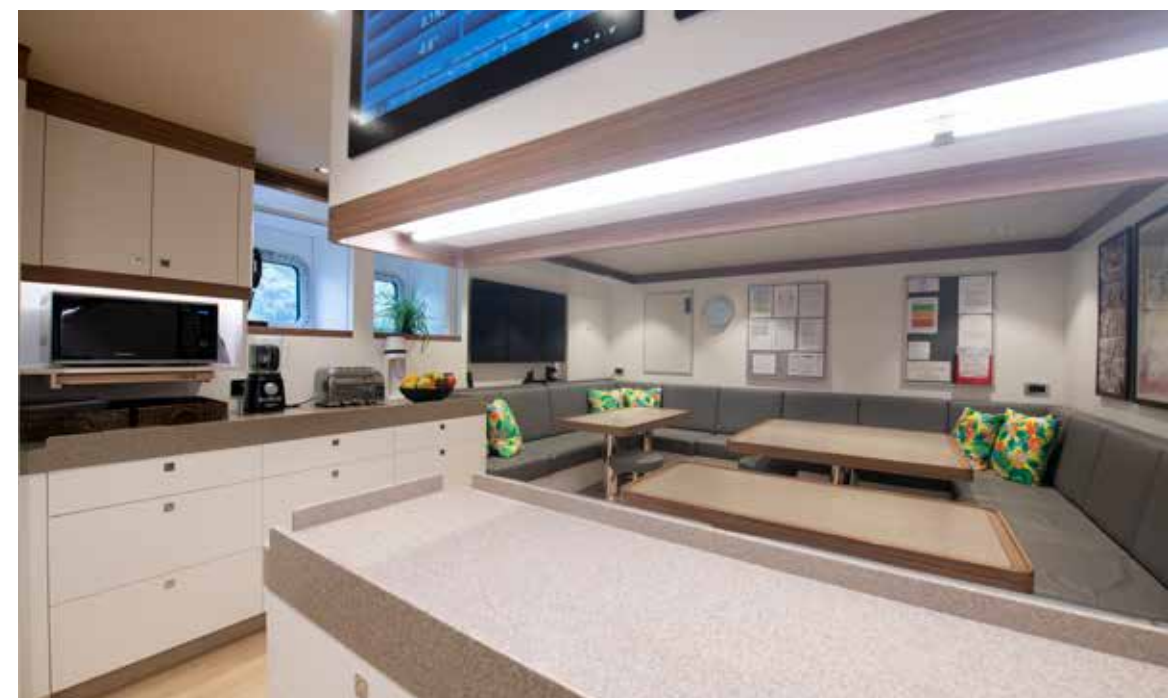


**GUEST CABINS**  
Four additional appointed suites offer boutique hotel-quality amenities for up to eight guests.

**OPTIONAL VIP SUITE**







#### CREW AREA

The crew area is spacious and filled with natural light. It provides quality accommodation for up to fourteen crew members in a variety of cabin configurations, together with a large and sociable crew mess, crew study area and state of the art utilities.



#### CAPTAIN'S CABIN



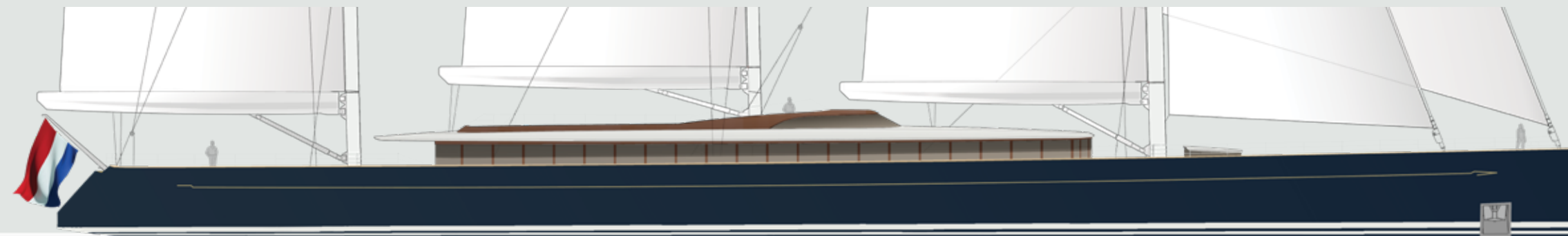
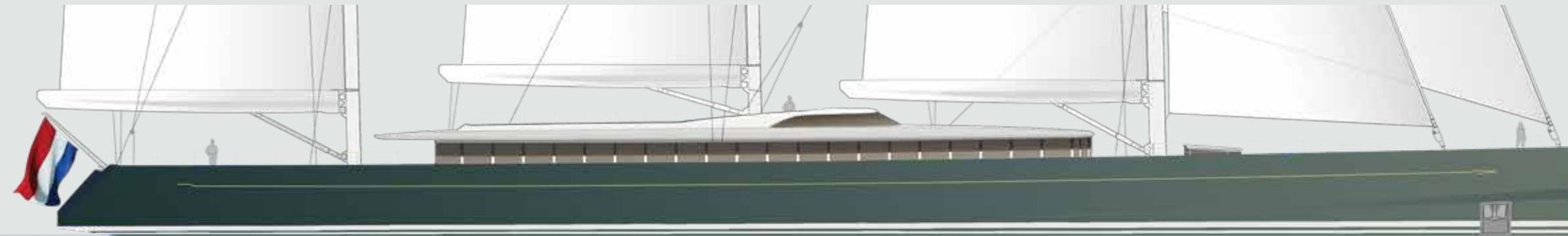
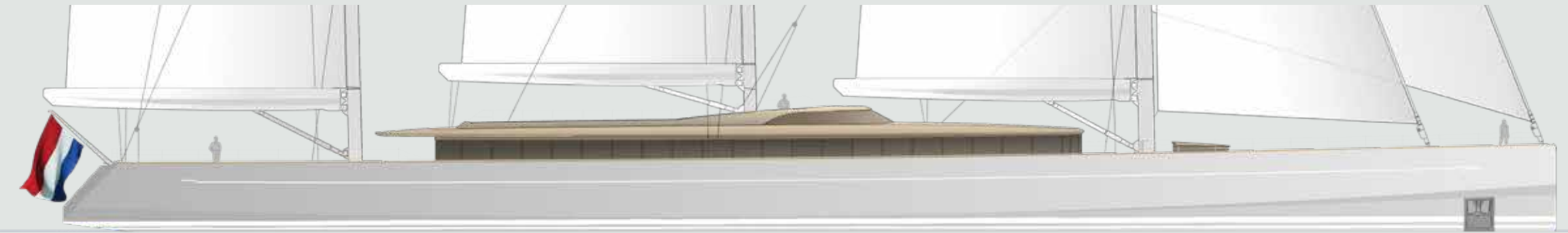
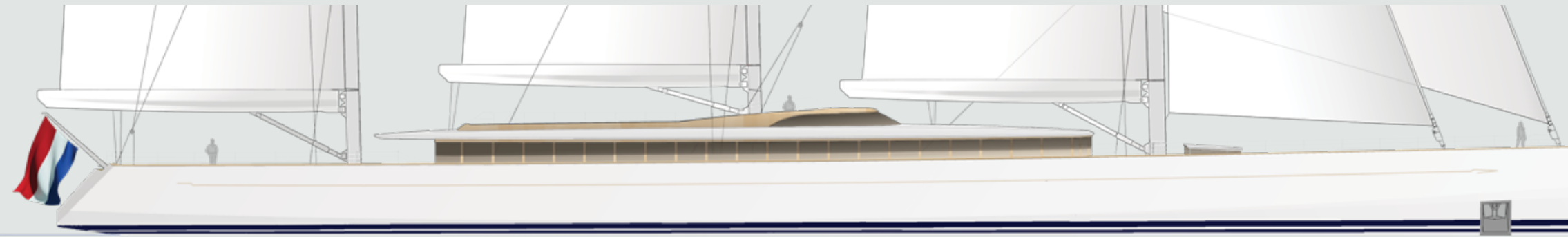
↑↓  
TRIDENT | 810

PROFILE





ALTERNATIVE COLORS





OPTIONAL DECKHOUSE PROFILES



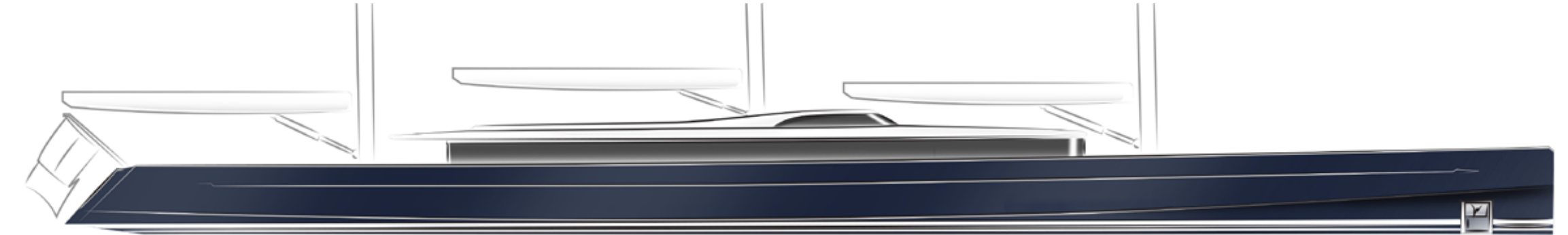
OPTION 1



OPTION 2



OPTION 3



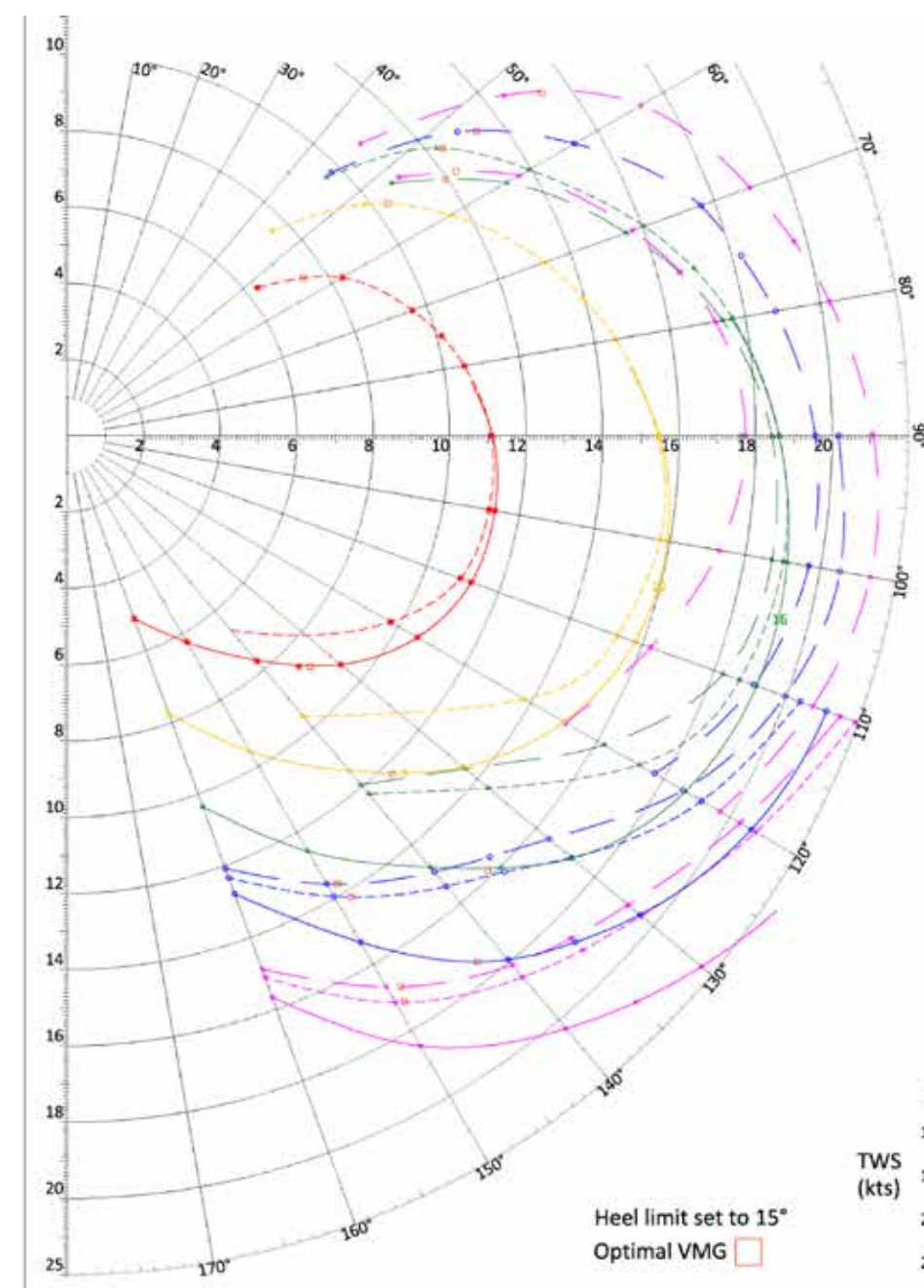
ORIGINAL DECKHOUSE PROFILE



SAIL PLAN



BOATSPEED VERSUS TRUE WIND ANGLE



SAILSET,  
AWS limit (kts)

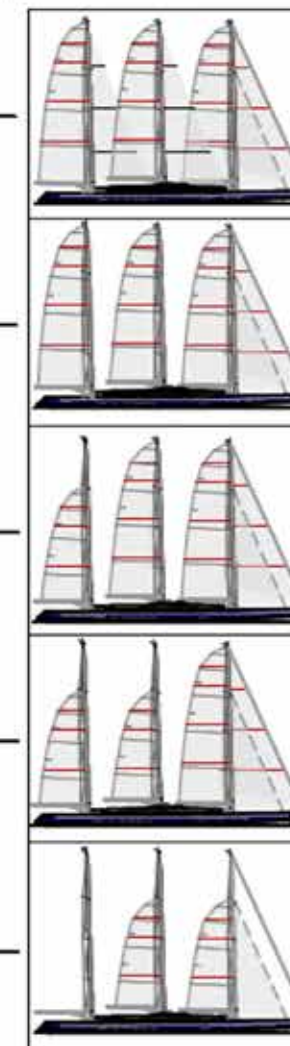
Y SS, 25

Y R0, 30

Y R1, 32

Y R2, 35

Y R5, 45



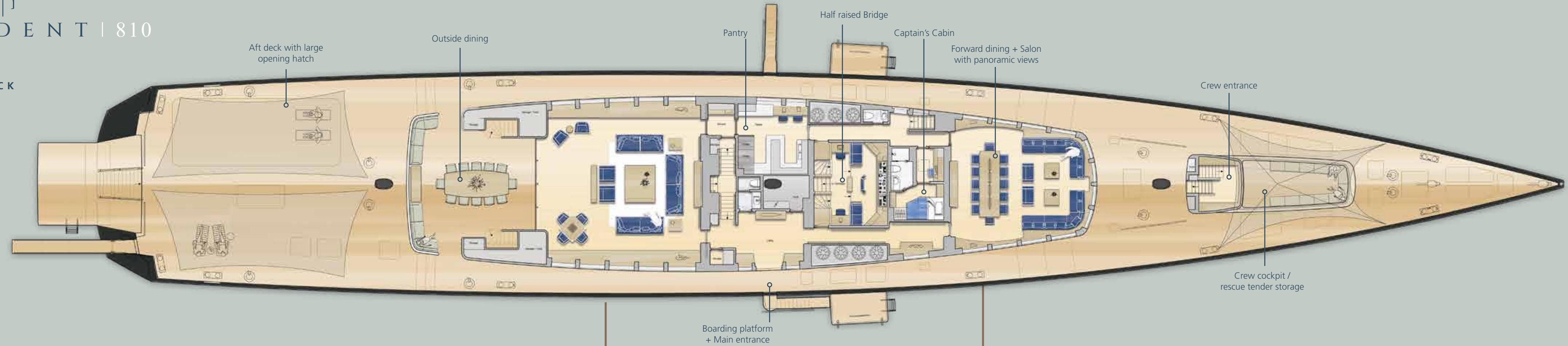




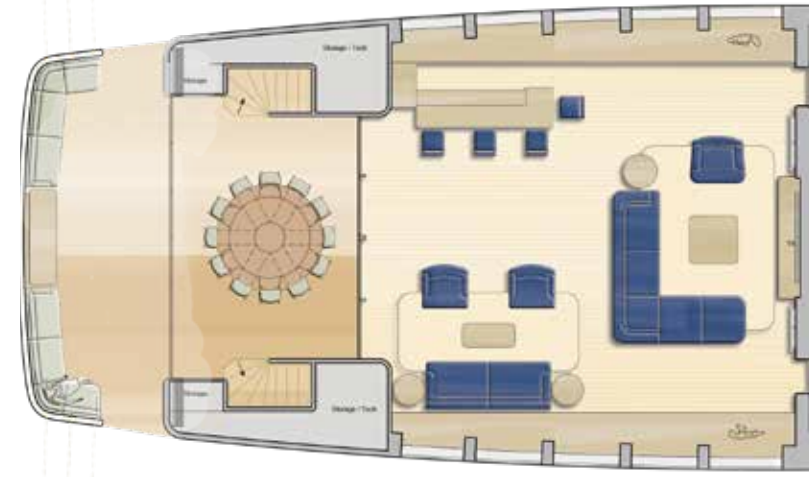
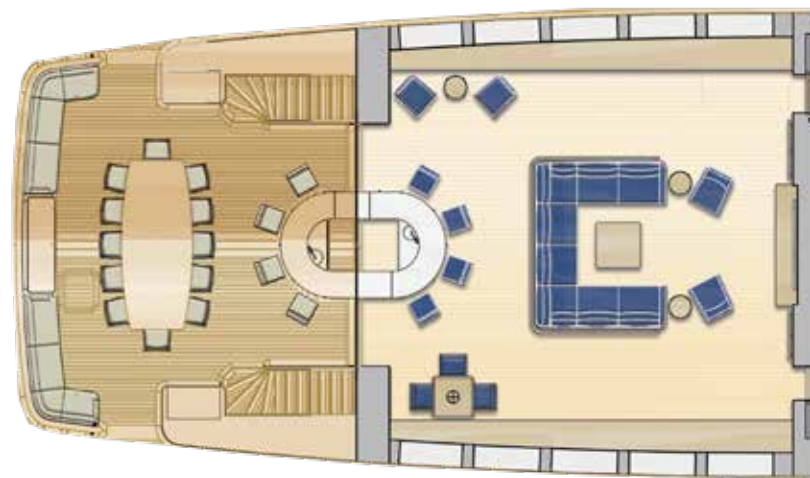


# TRIDENT | 810

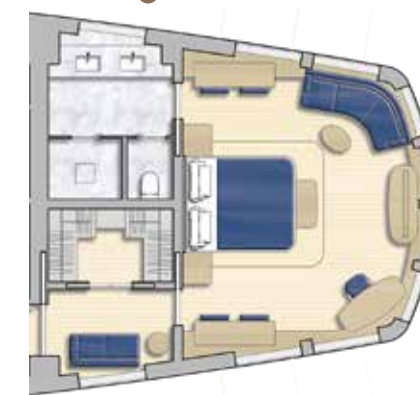
## MAIN DECK



## OPTIONAL LAYOUTS MAIN SALON



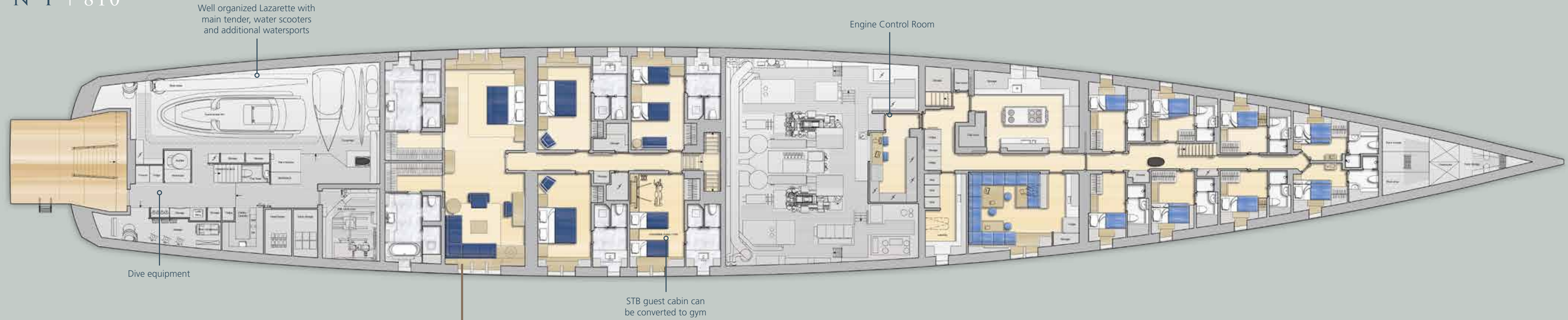
## OPTIONAL LAYOUT FORWARD SALON





# TRIDENT | 810

## CABIN DECK



## OPTIONAL LAYOUT OWNERS CABIN





SPECIFICATION

GENERAL

Naval architect	Dykstra Naval Architects
Exterior Design	Dykstra Naval Architects
	Mark Whiteley Design
Interior Designer	Mark Whiteley Design
Builder	Royal Huisman
length over all	81.0m / 266 ft
Length waterline	77.0 m / 252 ft
Beam	12.3 m / 40.5 ft
Draft	6.0 m / 19.7 ft
Displacement	961 tons / 2,118,652 lbs
Gross tonnage	1104 tons
Hull speed	21.4 knots

ACCOMMODATION

Guests	1 owner's suite and 4 guest cabins (Optional: 2 VIP suites and 4 guest cabins)
Crew	1 captain's cabin, 4 officer cabins and 4 crew cabins

CLASSIFICATION

Lloyds ⚡ 100A1, SSC, Yacht, Mono, G6, [⚡] LMC  
Red Ensign Group large yacht code (REG code part A)

RIG DIMENSIONS

**FORE MAST**  
P 51.6 m / 169.3 ft  
E 15.1 m / 49.7 ft  
I 54.4 m / 178.6 ft  
J 20.8 m / 63.3 ft

**MAIN MAST**  
P 51.1 m / 169.3 ft  
E 15.1 m / 49.7 ft

**MIZZEN MAST**  
P 53.2 m / 174.6 ft  
E 15.1 m / 49.7 ft  
Air draft 61.8 m / 202.5 ft

<b>SAIL AREA</b>	
Fore sail	587 m <sup>2</sup> / 6,318 ft <sup>2</sup>
Main sail	578 m <sup>2</sup> / 6,222 ft <sup>2</sup>
Mizzen sail	610 m <sup>2</sup> / 6,566 ft <sup>2</sup>
Yankee	547 m <sup>2</sup> / 5,888 ft <sup>2</sup>
Staysail	221 m <sup>2</sup> / 2,379 ft <sup>2</sup>

TECHNICAL

**CONSTRUCTION**  
Aluminium hull and superstructure

**MAIN ENGINES**  
2x CAT C32, 1081 kW @ 2100 rpm

**PROPELLER INSTALLATION**  
Controllable pitch propellers,  
diameter 1650 mm with 4 high skew blades

**GENERATORS**  
2x Caterpillar C7.1, 50 Hz / 1500 rpm, 120 kW

**THRUSTER SYSTEM**  
Bow and stern thruster,  
Ocean Yacht Systems, H0800 series

<b>TANK CAPACITIES</b>	
Fuel storage	90,000 L / 2,3775 USG
Fresh water	24,000 L / 6,340 USG
Grey water	12,500 L / 3,302 USG
Black water	3,300 L / 871 USG

**RANGE & SPEED**  
Hull speed 21.5 knots  
5000 Nm @ 12.5 knots

**SPARS AND RIGGING**  
Rondal carbon fibre masts  
Rondal carbon fibre furling booms  
Carbolink standing rigging

**DECK HARDWARE**  
Rondal

**WINCHES**  
Rondal hydraulic drum and reel winches



## DYKSTRA NAVAL ARCHITECTS

With over 50 years of experience, Dykstra Naval Architects is a leader in yacht design, naval architecture, and marine engineering. Founded in 1969 by Gerard Dykstra and now led by Thys Nikkels and Mark Leslie-Miller, the award-winning team combines deep sailing expertise with advanced engineering.

Their portfolio ranges from iconic refits of classic schooners and J-Class yachts to pioneering innovations such as the Dynarig and Aerorig. Driven by passion for performance and sustainability, Dykstra integrates in-house developed software, wind tunnel and towing tank testing, and continuous R&D to push boundaries in design and green technology. From new builds to re-designs, their work defines excellence in both tradition and innovation.

[dykstra-na.nl](http://dykstra-na.nl)



## MARK WHITELEY DESIGN

Mark Whiteley has been influential in the yacht design world for over 25 years. Co-directing an award-winning design company, playing a pivotal role in creating a diverse portfolio of over 50 innovative, elegant, and well regarded projects.

Hugely respected in the yachting sector and widely recognized as a leading interior and exterior designer, Mark has long established relationships with some of the best minds in the business.

His depth of experience and collaborative approach when working with owners, assure that the process is not only stimulating and absorbing, but also enjoyable and far exceeding their expectations.

[markwhiteleydesign.com](http://markwhiteleydesign.com)





## THE SHIPYARD IN VOLLENHOVE

- 1 Hall 1
- 2 Hall 2
- 3 Hall 4
- 4 Hall 4
- 5 Hall 5
- 6 Engineering
- 7 Rondal
- 8 Interior workshop
- 9 Paint workshop
- 10 Mast spray Hall
- 11 Composite Hall
- 12 Crew Offices







THE ULTIMATE EXPRESSION OF PERSONAL INDIVIDUALITY



---

FOR MORE INFORMATION

**Bas Isselmann**  
Sales Manager  
M +31 615 941 950  
[b.isselmann@royalhuisman.com](mailto:b.isselmann@royalhuisman.com)

  
ROYAL HUISMAN